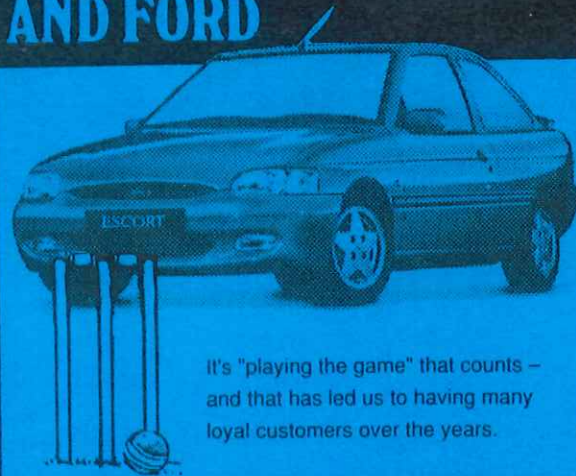


Shropshire
**IT'S JUST NOT CRICKET
WITHOUT FURROWS
AND FORD**



It's "playing the game" that counts –
and that has led us to having many
loyal customers over the years.

So why not become part of our
growing "club", after all, we're
playing our part in yours.



Furrows for Ford

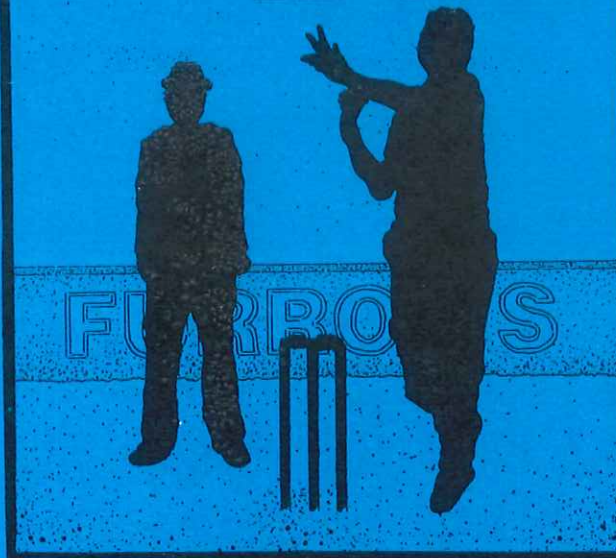
Haybridge Road
Wellington
Telford
(01952) 641433
Fax: (01952) 256632

Colton Hill
Shrewsbury
Tel.: (01743) 233631
Fax: (01743) 236009

Salop Road
Oswestry
Tel.: (01691) 654141
Fax: (01691) 661410

NSPrint (01939) 232796

FURROWS SHROPSHIRE CRICKET LEAGUE



HANDBOOK 1996



SHROPSHIRE COUNTY CRICKET CLUB

When and where to see the County in action in 1996 :

Minor Counties Fixtures :

Sun./Mon., 26th-27th May v. Herefordshire (Bridgnorth)

Sun./Mon., 2nd-3rd June v. Oxfordshire (Shrewsbury)

Sun./Mon., 16th-17th June v. Wiltshire (Wellington)

Sun./Mon., 7th-8th July v. Wales (Pontypridd)

Tue./Wed., 16th-17th July v. Berkshire (Oswestry)

Sun./Mon., 28th-29th July v. Dorset (Weymouth)

Sun./Mon., 4th-5th August v. Devon (Exmouth)

Tues./Wed., 6th-7th August v. Cornwall (St. Austell)

Tues./Wed., 20th-21st August v. Cheshire (Toft)

Minor Counties Cricket Association Knockout Trophy Competition.

First Round :

Sunday, 9th June v. Berkshire (St. Georges)

Second Round :

Sunday, 30th June Home Draw (Shrewsbury - provisional)

FURROWS SHROPSHIRE CRICKET LEAGUE REPRESENTATIVE XI MATCHES :

Midlands Club Cricket Conference

Inter League Knockout Competition

Tues. or Wed. 4th or 5th June v. Northamptonshire County
League (Home Draw)

League Cricket Conference, President's Trophy

National Knockout Competition

Sunday, 9th June v. North Somerset Cricket League (Home Draw)

CONTENTS

	Page
Officials	2
Foreword	3
Constitution	6
Rules and Playing Arrangements	9
League Fixtures 1996	13
1995 Honours	23
Previous Years' Divisional Winners/Runners Up	24
1995 Statistics	26
Knockout Competition Rules	44
1996 Knockout Competition Fixtures	46
1995 Knockout Competition Results and Previous Years' Finalists	47
Club Secretaries	48
Captains and Weekend Contacts	52
Umpires Panel	56
1995 League Representative Games & Results	57

**FURROWS SHROPSHIRE
CRICKET LEAGUE OFFICIALS**

President: R. E. GROVES, Esq., M.A., Dip.Ed.
Chairman: C. SMITH, Esq.,
"Ragleth", 12 Upper Road, Meole Brace,
Shrewsbury. Tel.: (01743) 355383

Vice-Chairman: M. J. E. TEECE, Esq.
Secretary: J. W. REES, Esq.,
7 Commercial Street, Newtown, Powys
Tel.: (01686) 622520

Fixture Secretary: M. J. E. TEECE, Esq.,
Broughshane, Burway Road,
Church Stretton,
Tel.: (01694) 722021

Treasurer: B. J. KITSON, Esq.,
73 Boscobel Drive, Heath Farm,
Shrewsbury. Tel.: (01743) 367836

Life Members: W. L. BLACKSHAW, Esq.
J. W. REES, Esq.

Executive Committee Members (20) :

NAME	TEL. No.	RETIRING
N. BROADBENT	(01691) 828800	1996
D. F. C. BUNTING	(01939) 290404	1996
G. D. ELCOCK	(01939) 250219	1996
G. FOSTER	(01952) 604000	1996
S. C. GALE	(01743) 355961	1997
R. HOLDEN	-	1997
P. HOULSTON	(01952) 460370	1996
J. HULME	(01691) 659194 (office)	1997
J. S. JOHNSON	(01694) 722655	1997
E. JONES	(01939) 250274	1998
M. KELLY	(01939) 290929	1998
E. NICHOLAS	(01691) 610414	1996
F. O'BRIEN	(01939) 261075	1997
T. O'CONNOR	(01952) 252922	1996
D. W. RALPHS	(01939) 232874	1996
M. SHEEHY	(01743) 361651	1998
D. THOMAS	(01743) 247606	1998
R. T. TUDOR	(01743) 246479	1996
VACANCY		
VACANCY		

SUB-COMMITTEE MEMBERS :

CONSTITUTION: Messrs. Broadbent (Chairman), Tudor, Kelly, Gale, Jones, Thomas, O'Connor, O'Brien, Nicholas, Hulme and Houlston

RULES: Messrs. Ralphs (Chairman), Broadbent, Elcock, Jones, Tudor, Teece, Johnson, Gale, Holden, Foster & Sheehy

DISCIPLINARY: Messrs. Smith (Chairman), Johnson, Teece & Sheehy

DOMESTIC K.O. COMPETITIONS: Messrs. Smith (Chairman) & Houlston

SELECTION (Senior): Messrs. Kitson (Chairman), Houlston, Smith, O'Connor, plus the elected Captain

CRICKET BALLS: Messrs. Tudor (Chairman), Bunting & Houlston

AWARDS: Messrs. Rees (Chairman), Kitson & Bunting

HANDBOOK CO-ORDINATOR & EDITOR: B. J. Kitson

DISPUTES: In addition to the above, a Disputes Sub-committee shall be formed, when the need arises, comprising any three members of the Executive Committee, selected at the discretion of the Chairman in order to ensure an early decision

FOREWORD

Although the continuance of the current league structure is seemingly always in doubt these days due to 'the eternal wrangle' about whether Division One should be embroiled in the promotion and relegation system, I have to say that in the interest of the clubs and cricket in general within our county, it is of paramount importance that the league remains as one unit.

Whilst one accepts that both factions have put forward valid arguments in favour of their cause, during this long running saga, and that partial agreements seemed to be on the cards late last year, until subsequent events proved otherwise, the only way forward now, for the time being at least, is to have a cooling off period, so allowing both parties to calmly take stock of the situation, because make no mistake about it, fragmentation of the present structure will lead to years, possibly decades, of dis-unity which is an aspect that Shropshire Cricket can well do without!

So far as 1995 was concerned, congratulations are in order to the F.S.C.L. representative side, who although not managing to capture a trophy, did ever so well in reaching the final of both "the National" and "Midland Conference" Knock-out Competitions, which in itself was quite a feat, by those players who so readily answered the call to perform under the league banner.

It goes without saying, that the continued invaluable support forthcoming from our main sponsors Furrows Ltd. is much appreciated by all connected with the league, the same goes for "The Shropshire Star", whose valued contributions are so important to the well being of the sport in general, "The Chronicle" Group of Newspapers and of course to "B.B.C. Radio Shropshire".

A special thank you, as always, to Brian Kitson for once again producing this latest edition of the League Handbook, also not forgetting those who advertise their 'wares' in the same, and finally may I take this opportunity of wishing players, officials and followers of the game, an enjoyable 1996 campaign.

CLIVE SMITH

DAVID TURNER CARS

"Purveyors of fine cars"

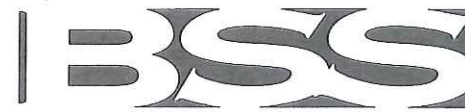
FORTON ROAD,
NEWPORT,
SHROPSHIRE
TF10 7JR
Tel.: (01952) 820450
Fax: (01952) 820113



William A. Lewis (Shrewsbury) Limited
281 Monkmoor Road
Shrewsbury,
Shropshire SY2 5TG

Tel.: (01743) 361121 Fax: (01743) 236741

4



Brian Shantry Sportswear

Tee shirts • Polo shirts • Shorts
Team Kits • Athletic vests
Training wear • Fleece jackets
Jogging suits • Sweatshirts
Thermal Lycra-wear
Customised headwear

*We can embroider and screen print
all garments*

Suppliers to Shropshire C.C.C.

84 Gains Avenue
Gains Park
Shrewsbury SY3 5EL

Tel./Fax: 01743 271465

5

CONSTITUTION

NAME: This organisation to be known as
THE FURROWS SHROPSHIRE CRICKET LEAGUE

OBJECT: To promote the best interests of cricket in Shropshire and its bordering counties and to foster and develop amateur talent in the game.

1. MEMBERSHIP

- (a) The League shall consist of a number of Divisions, the composition of which shall be decided by the Executive Committee, but the size of any division shall not normally exceed 12 teams.
- (b) The team finishing bottom of Division One shall apply in writing for re-election to that Division. The team finishing top of Division Two has an automatic right of application to join Division One. Any other Shropshire League Club may also apply. All applications must be received by the League Secretary by 15th October at the latest and will be determined by the Executive Committee by secret ballot.
- (c) With the exception of the two Division Ones, teams finishing in the bottom two positions of all divisions shall be relegated to the relevant division below, and shall be replaced by the top two teams from that division. The only exceptions to this would be special other arrangements that might be made by the Executive and notified to all clubs by appropriate notice.
- (d) The number of Clubs in membership shall only be increased if the Executive Committee on the recommendation and guidance of the Constitution Committee so decide after investigating the merits of each application (status, ground, amenities, facilities, playing strength, etc.)
- (e) Clubs wishing to resign from the League shall give notice in writing to the League Secretary by October 15th in the preceding year.
- (f) Clubs desiring admission to the League must apply in writing to the League Secretary not later than November 30th of the year preceding that in which they wish to take part.
- (g) The Executive Committee reserves the right to ask any Club to resign if in its opinion the general conduct or appointments of such Club do not satisfy the requirements of the League. In the event of any complaint against a member Club, that Club shall receive 14 days prior notice of the Committee's intention to hear that complaint and will be invited to send representatives to attend that part of the meeting hearing the complaint. This action shall be in addition to any steps taken under "Rules for the Conduct of Matches".
- (h) Any Club ceasing to be a member of the League shall at once forfeit any rights of participation in the assets of the League.

2. FINANCE

- (a) The subscription from each Club shall be £19.00 per team per annum or as determined by the Executive per team per annum to be paid not later than 1st May in any year. Clubs not paying their subscriptions by the due date may be charged an extra £5 penalty for every month or part of a month they are in arrears.
- (b) If the income from subscriptions is insufficient to meet League requirements, a further levy may be made on each Club.

- (c) The funds of the League shall be dealt with by and through an account with a Bank in the name of the League. Cheques may be drawn on two signatures. The Chairman, League Secretary and Hon. Treasurer shall be authorised signatories.
- (d) The financial year shall end on 30th September after which the accounts shall be audited by an Hon. Auditor who shall be elected at the Annual General Meeting.

3. OFFICERS

- (a) Officers of the League shall consist of the President, Chairman, Vice-Chairman, Hon. Treasurer, Hon. Secretary, Hon. Assistant Secretary and Hon. Fixture Secretary, all of whom, with the exception of the President, shall be elected at the Annual General Meeting. The President shall be elected by the Executive Committee.
- (b) Hon. Life Members shall be elected by the Executive Committee in recognition of past services to the League and shall be entitled to attend meetings of the Executive Committee.
- (c) A Hon. Legal Adviser shall be elected by the Executive Committee.

4. EXECUTIVE COMMITTEE

- (a) The League shall be governed by an Executive Committee consisting of the officers named in 3(a) above, twenty representatives.
- (b) Not more than two representatives from any one Club shall serve on this committee, with the exception of the officers named in 3(a) above.
- (c) Nine members shall form a quorum.
- (d) At least seven days notice of meetings shall be given.
- (e) The Executive Committee may appoint such sub-committees as they may from time to time consider necessary.
- (f) A Management Committee shall be formally appointed by the Executive Committee with full power to deal with any matters or issues which may arise and which are not covered by or need adjudication under these rules.
- (g) The Chairman or in his absence the Vice-Chairman, or if both are absent a deputy appointed by the Committee shall preside at all Executive Committee Meetings and shall have a casting vote.
- (h) The decision of the Executive Committee shall be final.
- (i) The Executive Committee shall have power to co-opt.
- (j) Members shall be elected to the Committee for a period of three years after which time they will retire and, if willing, offer themselves for re-election.
- (k) Executive Committee Members should register an attendance figure of at least 50%. Members failing to reach this attendance level are liable to expulsion.

5. ANNUAL GENERAL MEETING

- (a) The Annual General Meeting shall be held in November each year.
- (b) Twenty-eight clear days notice of the Annual General Meeting shall be given to all member clubs.
- (c) Nominations for officers and members of the Executive Committee must be received by the League Secretary not later than seven clear days before the date of the Annual General Meeting.

- (d) Proposals for alterations to the constitution must be received by the League Secretary on or before 30th September.
 - (e) Proposals for alterations to the constitution must receive two thirds of votes cast before acceptance and can only be considered at an Annual General Meeting or an Extraordinary General Meeting.
 - (f) Not more than one representative of each member club will be entitled to vote at the Annual General Meeting. The Chairman shall have the casting vote.
 - (g) If it is thought desirable that only certain member clubs should vote on a particular matter, this restriction shall only be permitted with the specific consent of the Annual General Meeting.
 - (h) Proxy votes will not be accepted.
 - (i) Fifteen member clubs shall form a quorum.
6. EXTRAORDINARY GENERAL MEETING
- (a) The Extraordinary General Meeting may be called at the discretion of the Executive Committee or on receipt by the League Secretary of a written request signed by not less than a third of the Member Clubs, stating the reason for which the meeting should be called.
 - (b) The provisions applicable to the Annual General Meeting, with the exception of 5(a), shall also apply to an Extraordinary General Meeting whenever such meeting is convened.
7. TROPHIES
- (a) Cups and shields respectively will be awarded at the end of each season to the champions and runners-up in all Divisions.
 - (b) In addition there are awards for the 'Young Player of the Year', the batsman who has scored the most runs and the bowler who has taken the most wickets during the season.
 - (c) All trophies should be returned to the League Secretary not later than 30th September in good condition, Failure to do so may result in that club being invoiced for the cost of a new trophy.
8. FIXTURES
- (a) All League matches will be played on the dates published in the League Handbook unless agreed as in (b) below.
 - (b) Clubs wishing to re-arrange a published fixture must BOTH give written notice to the League Secretary not less than ten days before the date of the proposed alteration. Such changes must receive the sanction of the Executive Committee who will only allow them in exceptional circumstances.
 - (c) Clubs not fulfilling fixtures shall be fined £10 for a first offence, £25 for a second offence and shall face expulsion from the League for a third offence.
 - (d) Clubs will be informed of dates on which a League representative XI may be required to play in a competition. On no account shall a player selected for this competition be withdrawn to play in a club competition.
 - (e) In the event of a Shropshire League club qualifying for the final of the National Club Championship Trophy, any club desirous of re-arranging their League fixtures for that day may so do.

RULES AND PLAYING ARRANGEMENTS

1. GENERAL
The Rules and Arrangements set out below will apply to all Divisions of the Shropshire League from 1st April, 1996, and will continue until officially amended on the authority of the Executive Committee of the League.
2. QUALIFICATION OF PLAYERS
- (a) No player shall be brought in from an outside League to play in the Shropshire League during the playing season without first obtaining the written consent of the Rules Sub-Committee of the League. An exemption will be made to this rule for clubs with teams competing in another league.
 - (b) A list of playing members for the coming season, from whom teams for the current season will be selected, must be submitted to the League Secretary no later than 31st May - failure to comply - mean teams accruing no points thereafter until a registered list of players is submitted. No permission will be granted to register players after 1st August. Any new players must be registered with the League Secretary after any such list is submitted.
 - (i) In exceptional circumstances players may be registered on the day of the game with the permission of the Rules Sub-Committee.
 - (ii) Transfer Forms - issued by the League - are to be completed by both Clubs and acknowledged by the Rules Sub-Committee before players are eligible to play - any such transfers are to be completed within seven days.
 - (c) Any bona fide member of a club may take part in League matches provided that:
 - (i) after transferring from another club in this League he has applied for and obtained the sanction of the Rules Sub-Committee to represent his new Club. Such applications must be received four clear days before his first match with his new club and must be accompanied by a letter from the Secretary of his old club confirming that he has fulfilled his obligations to that Club.
 - (ii) if he has played in 12 or more first team matches, he shall not be allowed to play in any of the last three matches in a lower division or in a second team match without the approval of the Rules Sub-Committee.
 - (iii) if he has played in 12 or more first or second team matches, he shall not be allowed to play in any of the last three matches in a lower division without the approval of the Rules Sub-Committee.
3. RULES FOR THE CONDUCT OF ALL MATCHES
- (a) All teams shall play each other on a home and away basis, fixtures being arranged by the League Fixture Secretary between mid-April and mid-September. All fixtures shall take place on a Saturday unless clubs are desirous of re-arranging a fixture after they have been published. In this case BOTH clubs must give written notice to the League Secretary not less than ten days before the date of the proposed alteration and must be granted permission before carrying out any change. Any infringement of this rule will result in the match being declared void.
 - (b) Matches shall be played in accordance with the LAWS of CRICKET subject to such specific points as are hereinafter stipulated.
 - (c) No underarm bowling will be allowed in the League.
 - (d) (i) The Executive Committee shall have the discretion to call a match void if they deem it necessary and may award or deduct points at their discretion.
 - (ii) In games with panel umpires officiating (e.g. Division One Games) umpires are instructed to apply a strict and consistent interpretation of the law covering 'Wide Ball' in order to prevent negative bowling, especially down the leg side or over the batsman's head. The following criteria should be adopted as a guide to umpires :-
 - (a) If in the umpire's opinion the ball passes either side of the wicket, sufficiently wide to make it virtually impossible for the batsman to play a normal 'cricketing stroke' - both from where he is standing and where he should normally be standing at the crease, the umpire shall call and signal 'wide ball'.

- (b) If the ball passes over head height of the batsman - standing upright at the crease, the umpire shall call and signal 'wide ball'.
Note: The aforementioned provisions do not apply if the striker makes contact with the ball or if it passes below head height between the striker and the wicket.
- (iii) After the toss has been made umpires officiating in Division One games shall be the sole arbiters of ground, weather and light conditions and are instructed that play shall not start, re-start or proceed when rain is falling.
4. **HOURS AND CONDITIONS OF PLAY**
- (a) All matches inclusive of Saturday, 29th April, to Saturday, 12th August, shall commence at 2.00 p.m., after which all matches inclusive of Saturday, 19th August, to Saturday, 23rd September, shall commence at 1.00 p.m.
- (b) Prompt starts are essential and the toss for innings shall take place at least fifteen minutes before the scheduled starting time. In the event of a team not being able to comply, the opposing team may, if it so wishes, exercise the right to claim the toss. Clubs who arrive late without a satisfactory explanation will be dealt with by the Executive Committee who may deduct two points from the record of the offending club.
- (c) (i) The duration of play shall be limited to 100 six-ball overs with an interval of 20 minutes for tea between innings.
(ii) In a 100 over match the side batting first may if they so wish, receive a maximum of 52 overs, with the side batting second receiving 48 overs.
(iii) In reduced over matches that exceed 70 overs the same 4 over ratio shall apply, should the side batting first wish to take advantage of this option, e.g. in a match reduced to 80 overs, the side batting first, if they so wish, may bat for a maximum of 42 overs, leaving the side batting second to receive 38 overs.
In matches reduced to between 50 and 70 overs (inclusive) the side batting first may, if they so wish, bat for two more overs than the side batting second, e.g. in a match reduced to 60 overs, the side batting first may, if they so wish, bat for 31 overs, with the side batting second receiving 29 overs.
(iv) The side batting second shall utilise the balance of the overs not used by the side batting first. Any odd balls bowled shall constitute an over.
(v) In conjunction with the scorers, the umpires shall ensure that the recording of overs and runs is correctly made and adequately displayed.
Before the first ball of the last over of each innings, the umpires shall call 'last over' clearly so that both sides understand.
(vi) Captains may agree to reduce the overs before the toss takes place if in their opinion the weather conditions so indicate. In these circumstances the provisions of Rule 5 will have no bearing unless 30 minutes have been lost after the start of play. The minimum number of overs to constitute a match shall be fifty.
(vii) No match throughout the season shall start after 4.00 p.m.
5. **INTERRUPTION OF PLAY**
- (a) (i) In the event of interference by weather, light or other unforeseen circumstances amounting to 30 minutes or more after the scheduled starting time of 2.00 p.m. in matches to the second Saturday in August inclusive, play shall cease at 8.30 p.m. or on the completion of the final 20 overs, or on the completion of the number of overs that constitute that particular match, with the final 20 overs, as per the laws of cricket, commencing at 7.30 p.m.
(ii) In matches played from the third Saturday in August play shall cease at 7.30 p.m. or on the completion of the final 20 overs or on the completion of the number of overs that constitute that particular match, with the final 20 overs, as per the laws of cricket, commencing at 6.30 p.m.
(iii) If an interruption of play occurs during the final 20 overs, the number of overs will be reduced by one over for every full three minutes lost and if the reduced number of overs are completed in matches to the second Saturday in August, before 8.30 p.m., and unless the number of overs constitute the completion of that particular match, play will continue until 8.30 p.m., or on the completion of the number of overs calculated to be bowled in the last hour, whichever shall be the later,

- the same will apply to matches played from the third Saturday in August, the cessation time being 7.30 p.m.
- (iv) **Note:** If the teams are off the field of play at the scheduled closing times detailed above, play shall be abandoned.
- (b) If, at the scheduled finishing times in (a) above, the side batting second still occupy the crease, and have received at least as many overs as the side batting first, then the game shall be a draw and the points allocated in accordance with Rule 6.
- (c) If the side batting second do not receive as many overs as the side batting first then the game shall be abandoned.
- (d) If a bowler is incapacitated during an over, that over shall be completed by any member of the fielding side other than he who bowled the previous over.
6. **ALLOCATION OF POINTS**
- WIN: 8 points.**
- TIE: 4 points** to each side only when the scores are equal and the team batting second are all out or have used their allocation of overs (Subject to Rule 5 (b) and 5 (c)).
- WINNING DRAW: 4 points** to the side scoring the greater number of runs in a completed match subject to rule 5(b) and 5(c).
- LOSING DRAW: 1 point**, provided that the side batting second scores more than 75% of the runs scored by the side batting first in a completed match. **Note:** If the side batting second fails to score more than 75% of the runs scored by the side batting first in a completed match, the side batting first shall receive 5 points and the side batting second shall receive no points.
- NOT STARTED: 1 point** to each side.
- ABANDONED: 1 point** to each side.
- OVER RATE:** Overs are required to be bowled at 17 overs per hour. Any side failing to attain an average of 17 overs per hour will have 8 points deducted from their overall points total at the end of the season. This rule applies to Division One and Reserve Division One only.
7. **THE BALL**
- Two new balls purchased through the League shall be used in all Division One, Division Two and Reserve Division One games. One new ball purchased through the League shall be used in all Division, Three, Four and Five games. Any Club not having paid for its allocation by the due date shall be liable to a surcharge of £10. In all other Reserve Divisions, a new ball need not be provided for every match but the ball to be used shall be in good condition and of good quality. This shall be submitted to and approved by the Captains before the toss. Two new balls, purchased through the League may be provided by the home side for use in any League game subject to the agreement of the opposing Captain prior to the toss taking place.
8. **QUALIFICATION OF UMPIRES**
- (a) An umpire may be required to satisfy the Rules Sub-Committee as to his competence either on appointment or at any time thereafter.
- (b) If one side provides an umpire and the other side does not provide one, that one umpire should be the official umpire for the match and should stand at the bowler's end throughout the match.
- (c) Umpires should be responsible for noting and recording the over rate - viz. overs bowled and time taken - and will be required to note this information on the official League Score Sheet.
- (d) The Shropshire Association of Cricket Umpires will be responsible for appointing umpires to all Division One and League Knockout fixtures.
- (e) No fee as such is payable to umpires appointed from the panel. Expenses will be met by the Shropshire Association of Cricket Umpires with all Division One Clubs being expected to submit, on request, a one-off payment to the Shropshire A.C.U. to cover such costs.
- (f) Captains are to award marks out of ten to panel umpires officiating in Division One matches and to submit the forms provided by the League together with the result sheets to the League Secretary. Umpires will also be empowered to comment on ground facilities and the co-operation of teams and captains.

9. PREPARATION OF PITCHES
 - (a) Preparation of pitches must be in accordance with the M.C.C. Laws and Instruction. Pitches should not be watered in the 48 hour period preceding any match.
 - (b) Pitches may be wholly covered at all times where possible. Before the toss is made, the home Captain should advise his opposite number whether covers are available.
10. PLAYERS CROSSING
 - (a) The attention of Captains is drawn to Note 2(b) of Law 31, whereby it is one of their duties to ensure the incoming batsman passes the outgoing one before the latter leaves the field of play.
11. CANCELLATION OF MATCHES

In the event of any ground being unfit for play owing to weather or other circumstances it shall be the responsibility of the home club to inform the visiting club of this fact.

This should be carried out on the day of the match NOT before 11.00 a.m. and NOT later than 12.00 noon. (10.00 a.m. and 11.00 a.m. from the third Saturday in August).

Opponents have the option to travel.
12. NOTIFICATION OF RESULTS
 - (a) It shall be the responsibility of the home club to send full details of the match played on the score sheet issued by the League which is signed by both Captains. This score sheet must reach the League Secretary by the first post each Thursday after the match has been played. Failure to comply with this rule will result in two points being deducted from the offending club.
 - (b) Clubs should make every effort to notify "the Shropshire Star" of the result of their game by the Monday deadline.
13. PROTEST
 - (a) Any protest shall be lodged with the League Secretary in writing within four days following the match.
 - (b) A copy of such protest shall be sent to the club against whom the protest is made.
 - (c) Each protest is to be accompanied by a fee of £5 which shall be forfeited if the Disputes Sub-Committee deems the protest to be trivial.
 - (d) The club sustaining the protest or objection shall have the points added to its total points gained, but such points not to exceed the maximum for a win. The club against whom the protest has been made to lose any points gained.
 - (e) Clubs when making a protest shall state under which rule the protest is made.
 - (f) Clubs or players who are the subject of protests or disputes may be required to attend the hearing of that protest or dispute.
 - (g) Any dispute having reference to the Laws of Cricket shall be referred to the Cricket Council for settlement and their decision shall be final, but in all other matters the decision of the League shall be final.
14. LEAGUE POSITIONAL PLACINGS

In the event of two or more teams finishing on the same number of points at the end of a season, the following factors shall be used to determine final placings: firstly - the number of points gained from least completed matches; if still equal, most wins; if still equal, least defeats; if still equal, most winning draws; if still equal, most away wins; if still equal, the points tally of League matches played that season between the teams involved; if still equal, most wickets taken during the season.
15. These rules are binding on all players and clubs in the Furrows Shropshire Cricket League and the Executive Committee may take action against defaulting clubs or players.
16. ARTIFICIAL PITCHES

Clubs outside Division One who wish to play a League fixture on an artificial pitch, must notify and obtain agreement from the opposing team ten days before the fixture is due to be played. Failure to comply with this requirement may result in the loss of points.

DIVISION ONE FIXTURES 1996

Home Games Bracketed

RESERVE DIVISION ONE FIXTURES are the reverse of these

1. WROXETER AND UPINGTON	2. SHREWSBURY	3. LUDLOW	4. BRIDGNORTH	5. ST. GEORGES	6. WELLINGTON	7. WHITCHURCH	8. OSWESTRY	9. NEWPORT	10. PERKINS	11. SHIFNAL	12. WEM											
APRIL 27	APRIL 4	MAY 11	18	25	JUNE 1	8	15	22	29	JULY 6	13	20	27	AUG 3	10	17	24	31	7	SEPT 14	21	
(10)	9	(8)	7	(6)	5	(4)	3	(2)	1	(11)	10	(9)	8	7	(6)	5	4	3	2	(1)	(10)	11
(9)	8	(7)	6	(5)	4	(3)	2	(1)	11	(10)	9	(8)	7	(6)	5	4	3	2	(1)	(10)	11	
(8)	7	(6)	5	(4)	3	(2)	1	(11)	10	(9)	8	(7)	6	(5)	4	3	2	(1)	(10)	11	(9)	
(7)	6	(5)	5	(4)	3	(2)	1	(11)	10	(9)	8	(7)	6	(5)	4	3	2	(1)	(10)	11	(9)	
(6)	5	(4)	4	(3)	2	(1)	11	(10)	9	(8)	7	(6)	5	(4)	3	2	(1)	(10)	11	(9)	(8)	
(5)	4	(3)	3	(2)	1	(11)	10	(9)	8	(7)	6	(5)	4	(3)	2	(1)	(10)	11	(9)	8	(7)	
(4)	3	(2)	2	(1)	11	(10)	9	(8)	7	(6)	5	(4)	3	(2)	1	(10)	11	(9)	8	7	(6)	
3	(2)	1	(11)	10	(9)	(12)	7	(6)	5	(4)	3	(2)	1	(11)	10	12	(8)	7	6	5	(4)	
2	(1)	(12)	11	(10)	9	(8)	7	(6)	5	(4)	3	(2)	1	(11)	10	12	(8)	7	6	5	(4)	
1	(11)	(12)	10	(9)	8	(7)	6	(5)	4	(3)	2	1	(12)	(10)	9	8	7	6	5	4	3	
12	10	(9)	8	(7)	6	(5)	4	(3)	2	1	(12)	(10)	9	8	7	6	5	4	3	2	(1)	
(11)	(5)	10	(4)	9	(3)	8	(2)	7	(1)	(6)	11	5	(10)	4	(9)	3	(8)	2	(7)	1	6	

DIVISION TWO FIXTURES 1996

Home Games Bracketed

	APRIL	MAY	JUNE	JULY	AUG.	SEPT.																	
1. WELSHPOOL	(10)	9	(8)	7	(6)	5	(4)	3	(2)	1	(11)	10	(9)	8	(7)	6	(5)	4	(3)	2	(12)	11	
2. SHELTON	(9)	8	(7)	6	(5)	4	(3)	12	1	(11)	10	9	(8)	7	(6)	5	(4)	3	(12)	(1)	11	(10)	
3. ALBRIGHTON	(8)	7	(6)	5	(4)	12	2	(1)	11	(10)	9	8	(7)	6	(5)	4	(12)	(2)	1	(11)	10	(9)	
4. WHITTINGTON	(7)	6	(5)	12	3	(2)	1	(11)	10	(9)	8	7	(6)	5	(12)	(4)	3	(2)	1	11	(10)	9	(8)
5. BRITISH SUGAR	(6)	12	4	(3)	2	(1)	11	(10)	9	(8)	7	6	(12)	(4)	3	(2)	1	(11)	10	(9)	8	(7)	(12)
6. FRANKTON	5	(4)	3	(2)	1	(11)	10	(9)	8	(7)	12	(5)	4	(3)	2	(1)	11	(10)	9	(8)	7	(12)	
7. HANWOOD	4	(3)	2	(1)	11	(10)	9	(8)	(12)	6	(5)	(4)	3	(2)	1	(11)	10	(9)	8	12	(6)	5	
8. BOMERE HEATH	3	(2)	1	(11)	10	(9)	(12)	7	(6)	5	(4)	(3)	2	(1)	11	(10)	9	12	(7)	6	(5)	4	
9. LLANIDLOES	2	(1)	11	(10)	(12)	8	(7)	6	(5)	4	(3)	(2)	1	(11)	10	12	(8)	7	(6)	5	(4)	3	
10. FORTON	1	(11)	(12)	9	(8)	7	(6)	5	(4)	3	(2)	1	11	12	(9)	8	(7)	6	(5)	4	(3)	2	
11. MONTGOMERY	12	10	(9)	8	(7)	6	(5)	4	(3)	2	1	(12)	(10)	9	(8)	7	(6)	5	(4)	3	(2)	(1)	
12. COTON HALL	(11)	(5)	10	(4)	9	(3)	8	(2)	7	(1)	(6)	11	5	(10)	4	(9)	3	(8)	2	(7)	1	6	

14

DIVISION THREE FIXTURES 1996

Home Games Bracketed

	APRIL	MAY	JUNE	JULY	AUG.	SEPT.																	
1. BROMFIELD	(10)	9	(8)	7	(6)	5	(4)	3	(2)	1	(11)	10	(9)	8	(7)	6	(5)	4	(3)	2	(12)	11	
2. OVERTON	(9)	8	(7)	6	(5)	4	(3)	12	1	(11)	10	9	(8)	7	(6)	5	(4)	3	(12)	(1)	11	(10)	
3. MUCH WENLOCK	(8)	7	(6)	5	(4)	12	2	(1)	11	(10)	9	8	(7)	6	(5)	4	(12)	(2)	1	(11)	10	(9)	
4. NEWTOWN	(7)	6	(5)	12	3	(2)	1	(11)	10	(9)	8	7	(6)	5	(12)	(3)	2	(1)	11	(10)	9	(8)	
5. TRYSULL & SEISDON	(6)	12	4	(3)	2	(1)	11	(10)	9	(8)	7	6	(12)	(4)	3	(2)	1	(11)	10	(9)	8	(7)	(12)
6. TIBBERTON	5	(4)	3	(2)	1	(11)	10	(9)	8	(7)	12	(5)	4	(3)	2	(1)	11	(10)	9	(8)	7	(12)	
7. CAE GLAS	4	(3)	2	(1)	11	(10)	9	(8)	(12)	6	(5)	(4)	3	(2)	1	(11)	10	(9)	8	12	(6)	5	
8. BROSELEY	3	(2)	1	(11)	10	(9)	(12)	7	(6)	5	(4)	(3)	2	(1)	11	(10)	9	12	(7)	6	(5)	4	
9. COUND	2	(1)	11	(10)	(12)	8	(7)	6	(5)	4	(3)	(2)	1	(11)	10	12	(8)	7	(6)	5	(4)	3	
10. PONTESBURY	1	(11)	(12)	9	(8)	7	(6)	5	(4)	3	(2)	1	11	12	(9)	8	(7)	6	(5)	4	(3)	2	
11. KNOCKIN	12	10	(9)	8	(7)	6	(5)	4	(3)	2	1	(12)	(10)	9	(8)	7	(6)	5	(4)	3	(2)	(1)	
12. ISCOYD & FENNIS BANK	(11)	(5)	10	(4)	9	(3)	8	(2)	7	(1)	(6)	11	5	(10)	4	(9)	3	(8)	2	(7)	1	6	

15

DIVISION FOUR FIXTURES 1996

Home Games Bracketed

	APRIL	MAY	11	18	25	1	8	15	22	29	JULY	5	12	19	26	2	9	16	23	30	AUG.	6	13	20	27	3	10	17	24	31	7	14	21	
	SEPT.																																	
1. WILLEY	(10)	9	(8)	7	(6)	5	(4)	3	(2)	12	(11)	10	(9)	8	(7)	6	(5)	4	(3)	2	(1)	11	10	(9)	8	(7)	6	(5)	4	(3)	2	(1)	11	
2. QUATT	(9)	8	(7)	6	(5)	4	(3)	12	1	(11)	10	9	(8)	7	(6)	5	(4)	3	(2)	1	11	(10)	9	8	(7)	6	(5)	4	(3)	2	(1)	11	(10)	
3. PREES	(8)	7	(6)	5	(4)	12	2	(1)	11	(10)	9	8	(7)	6	(5)	4	(3)	2	(1)	11	(10)	9	8	(7)	6	(5)	4	(3)	2	(1)	11	10	(9)	
4. CALVERHALL	(7)	6	(5)	12	3	(2)	1	(11)	10	9	8	7	(6)	5	(4)	3	(2)	1	11	(10)	9	8	(7)	6	(5)	4	(3)	2	(1)	11	(10)	9	(8)	
5. ALBERBURY	(6)	12	4	(3)	2	(1)	11	(10)	9	(8)	7	6	(5)	4	(3)	2	(1)	11	(10)	9	8	(7)	6	(5)	4	(3)	2	(1)	11	10	(9)	8	(7)	
6. EDGMOND	5	(4)	3	(2)	1	(11)	10	9	(8)	7	6	(5)	4	(3)	2	(1)	11	(10)	9	8	(7)	6	(5)	4	(3)	2	(1)	11	(10)	9	(8)	7	(12)	
7. HODNET	4	(3)	2	(1)	11	(10)	9	(8)	(12)	6	(5)	4	(3)	2	(1)	11	(10)	9	8	(7)	6	(5)	4	(3)	2	(1)	11	(10)	9	8	12	(6)	5	
8. TELFORD MOSLEMS	3	(2)	1	(11)	10	9	(12)	7	(6)	5	(4)	3	(2)	1	11	(10)	9	12	(7)	6	(5)	4	(3)	2	(1)	11	(10)	9	12	(7)	6	(5)	4	
9. CRAVEN ARMS	2	(1)	11	(10)	(12)	8	(7)	6	(5)	4	(3)	(2)	1	(11)	10	12	(8)	7	(6)	5	(4)	3	(2)	1	11	(10)	12	(8)	7	(6)	5	(4)	3	
10. ACTON REYNALD	1	(11)	(12)	9	(8)	7	(6)	5	(4)	3	(2)	(1)	11	12	(9)	8	(7)	6	(5)	4	(3)	2	1	11	12	(9)	8	(7)	6	(5)	4	(3)	2	
11. ELLESMERE	12	10	(9)	8	(7)	6	(5)	4	(3)	2	1	(12)	(10)	9	(8)	7	(6)	5	(4)	3	(2)	1	(12)	(10)	9	(8)	7	(6)	5	(4)	3	(2)	1	(1)
12. HARCOURT	(11)	(5)	10	(4)	9	(3)	8	(2)	7	(1)	(6)	11	5	(10)	4	(9)	3	(8)	2	(7)	1	(6)	11	5	(10)	4	(9)	3	(8)	2	(7)	1	6	

DIVISION FIVE FIXTURES 1996

Home Games Bracketed

	APRIL	MAY	11	18	25	1	8	15	22	29	JULY	5	12	19	26	2	9	16	23	30	AUG.	6	13	20	27	3	10	17	24	31	7	14	21	
	SEPT.																																	
1. LILleshall	(10)	9	(8)	7	(6)	5	(4)	3	(2)	12	(11)	10	(9)	8	(7)	6	(5)	4	(3)	2	(1)	11	10	(9)	8	(7)	6	(5)	4	(3)	2	(1)	11	
2. BISHOPS CASTLE	(9)	8	(7)	6	(5)	4	(3)	12	1	(11)	10	9	(8)	7	(6)	5	(4)	3	(2)	1	11	(10)	9	8	(7)	6	(5)	4	(3)	2	(1)	11	(10)	
3. GLYNWED	(8)	7	(6)	5	(4)	12	2	(1)	11	(10)	9	8	(7)	6	(5)	4	(3)	2	(1)	11	(10)	9	8	(7)	6	(5)	4	(3)	2	(1)	11	10	(9)	
4. CHURCH ASTON	(7)	6	(5)	12	3	(2)	1	(11)	10	9	8	7	(6)	5	(4)	3	(2)	1	11	(10)	9	8	(7)	6	(5)	4	(3)	2	(1)	11	(10)	9	(8)	
5. GUILDFIELD	(6)	12	4	(3)	2	(1)	11	(10)	9	(8)	7	6	(5)	4	(3)	2	(1)	11	(10)	9	8	(7)	6	(5)	4	(3)	2	(1)	11	10	(9)	8	(7)	
6. MEB	5	(4)	3	(2)	1	(11)	10	9	(8)	7	6	(5)	4	(3)	2	(1)	11	(10)	9	8	(7)	6	(5)	4	(3)	2	(1)	11	(10)	9	(8)	7	(12)	
7. CHURCH STRETTON	4	(3)	2	(1)	11	(10)	9	(8)	(12)	6	(5)	4	(3)	2	(1)	11	(10)	9	12	(7)	6	(5)	4	(3)	2	(1)	11	(10)	9	12	(7)	6	(5)	4
8. CONDOVER	3	(2)	1	(11)	10	(9)	(12)	7	(6)	5	(4)	3	(2)	1	11	(10)	9	12	(7)	6	(5)	4	(3)	2	(1)	11	(10)	9	12	(7)	6	(5)	4	
9. NALGO	2	(1)	11	(10)	(12)	8	(7)	6	(5)	4	(3)	(2)	1	(11)	10	12	(8)	7	(6)	5	(4)	3	(2)	1	11	(10)	12	(8)	7	(6)	5	(4)	3	
10. CHELMARSH	1	(11)	(12)	9	(8)	7	(6)	5	(4)	3	(2)	(1)	11	12	(9)	8	(7)	6	(5)	4	(3)	2	1	11	12	(9)	8	(7)	6	(5)	4	(3)	2	
11. NOXTURE	12	10	(9)	8	(7)	6	(5)	4	(3)	2	1	(12)	(10)	9	(8)	7	(6)	5	(4)	3	(2)	1	(12)	(10)	9	(8)	7	(6)	5	(4)	3	(2)	1	(1)
12. HINSTOCK	(11)	(5)	10	(4)	9	(3)	8	(2)	7	(1)	(6)	11	5	(10)	4	(9)	3	(8)	2	(7)	1	(6)	11	5	(10)	4	(9)	3	(8)	2	(7)	1	6	

RESERVE DIVISION FOUR FIXTURES 1996

Home Games Bracketed

20	21	14	7	31	24	17	10	3	27	20	13	6	29	22	15	8	1	25	18	11	4	27
			SEPT.				AUG.					JULY					JUNE				MAY	APRIL
1. BROMFIELD 2nd XI	10	(9)	8	(7)	6	(5)	4	(3)	2	(1)	11	(10)	9	(8)	7	(6)	5	(4)	3	(2)	1	12
2. WELLINGTON 4th XI	9	(8)	7	(6)	5	(4)	3	(2)	1	(11)	10	(9)	8	(7)	6	(5)	4	(3)	2	1	(12)	11
3. WEM 3rd XI	8	(7)	6	(5)	4	(3)	2	(1)	11	(10)	9	(8)	7	(6)	5	(4)	3	(2)	1	(11)	10	9
4. SHIFNAL 3rd XI	7	(6)	5	(4)	3	(2)	1	(11)	10	9	(8)	7	(6)	5	(4)	3	(2)	1	(11)	10	9	8
5. ALBERBURY 2nd XI	6	(5)	4	(3)	2	(1)	11	(10)	9	(8)	7	(6)	5	(4)	3	(2)	1	(11)	10	9	8	7
6. SHELTON 3rd XI	(5)	4	(3)	2	(1)	11	(10)	9	(8)	7	(6)	5	(4)	3	(2)	1	(11)	10	9	8	7	12
7. WELSHPOOL 3rd XI	(4)	3	(2)	1	(11)	10	9	8	7	(6)	5	4	(3)	2	(1)	11	(10)	9	8	7	(6)	5
8. BOMERE HEATH 2nd XI	(3)	2	(1)	11	10	9	8	7	(6)	5	4	(3)	2	(1)	11	10	9	8	7	(6)	5	4
9. COUND 2nd XI	(2)	1	(11)	10	9	8	7	(6)	5	4	(3)	2	(1)	11	10	9	8	7	(6)	5	4	3
10. PONTESBURY 2nd XI	(1)	11	10	9	8	7	(6)	5	4	(3)	2	(1)	11	10	9	8	7	(6)	5	4	3	2
11. ELLESMERE 2nd XI	(12)	(10)	9	(8)	7	(6)	5	(4)	3	(2)	1	12	10	(9)	8	(7)	6	(5)	4	3	2	1
12. ISCOVD & FERMS BANK 2nd XI	11	5	(10)	4	(9)	3	(8)	2	(7)	1	6	(11)	5	(10)	9	(8)	7	(6)	5	4	(3)	2

**SHREWSBURY
OFFICE SERVICES**

PLAN COPYING,
ENLARGING AND REDUCING
FULL COLOUR COPYING.
COPYING & BINDING.
TYPING SERVICE.
SIMPLY THE BEST

(01743) 357251

8A COLLEGE HILL, SHREWSBURY SY1 1LZ

**THE KING'S HEAD
GUILDSFIELD**

AFTER THE MATCH
CAROL, ROY AND STEPHEN
WELCOME YOU TO

Telephone :
WELSHPOOL (01938) 553656

ENJOY TRADITIONAL BEERS
AND GOOD FOOD

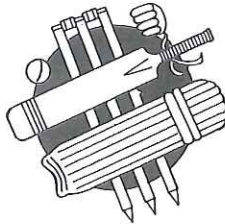
ALL FURROWS SHROPSHIRE CRICKET LEAGUE

**PLAYERS AND SUPPORTERS
ARE INVITED TO JOIN**

**SHROPSHIRE
COUNTY
CRICKET
CLUB**

ANNUAL MEMBERSHIP £10.00

MEMBERS' TIES £6.00



PLEASE CONTACT :

**The Treasurer
R. G. Hamar
Brook House
Ford
Nr. Shrewsbury**

Tel.: Shrewsbury (01743) 850389

1995 HONOURS

DIVISION ONE	Champions Runners up	Wroxeter and Uppington Shrewsbury
DIVISION TWO	Champions Runners up	Welshpool Montgomery
DIVISION THREE	Champions Runners up	Bomere Heath Hanwood
DIVISION FOUR	Champions Runners up	Trysull & Seisdon Cound
DIVISION FIVE	Champions Runners up	Hodnet Edgmond
RESERVE DIVISION ONE	Champions Runners up	Bridgnorth 2nd XI Wroxeter & Uppington 2nd XI
RESERVE DIVISION TWO	Champions Runners up	Oswestry 3rd XI Welshpool 2nd XI
RESERVE DIVISION THREE	Champions Runners up	Condover 2nd XI British Sugar 2nd XI
RESERVE DIVISION FOUR	Champions Runners up	Broseley 2nd XI Perkins 3rd XI
LEAGUE KNOCKOUT (Chronicle Cup)	Winners Runners up Man of the Match	Wellington Bridgnorth Tony Hurdley (Bridgnorth)
VILLAGE KNOCKOUT (Furrows Village Cup)	Winners Runners up Man of the Match	Coton Hall Frankton Nicky Beardmore (Coton Hall)

1995 INDIVIDUAL AWARDS

YOUNG PLAYER OF THE YEAR	League Award (BBC Radio Shropshire Trophy)	Martin Gaunt (Wem)
MOST RUNS DURING SEASON	(Shropshire Star Trophy)	Mo Fiaz (Telford Mostlems - 1300)
MOST WICKETS DURING SEASON	(Impact Shield)	Martin Parton (Edgmond - 84)
SHROPSHIRE STAR BAT OF THE MONTH	May June July August September	Chris Edwards (Frankton 2nd XI) Neil Salisbury (Shrewsbury Hospitals) Mo Fiaz (Telford Mostlems) Barry Managh (Hodnet) Nick Williams (Oswestry)

PREVIOUS YEARS' DIVISIONAL WINNERS/RUNNERS UP

Winners	Runners up	Winners	Runners up
DIVISION ONE		DIVISION TWO	
1970 Rolls Royce	Newport	1970 Colton Hall	M.E.B.
1971 Newport/Wern (TIE)		1971 Fenns Bank	Colton Hall
1972 Oswestry/Shifnal (TIE)		1972 Shawbury	Colton Hall
1973 Wroxeter	St. Georges	1973 Colton Hall	Shawbury
1974 Wroxeter	Newport	1974 Colton Hall	Prees
1975 Shrewsbury	Wroxeter	1975 Colton Hall	Bromfield
1976 Shrewsbury	Bridgnorth	1976 Fenns Bank	Bromfield
1977 Newport	Shrewsbury	1977 Fenns Bank	Colton Hall
1978 Shrewsbury	St. Georges	1978 Fenns Bank	Ellesmere
1979 Wroxeter	Shrewsbury	1979 Albrighton	Cae Glas
1980 Shrewsbury	Wroxeter	1980 M.E.B.	Colton Hall
1981 Whitchurch	Newport	1981 Bomere Heath/M.E.B. (TIE)	
1982 Shrewsbury	Wern	1982 Craven Arms	Shawbury
1983 Shrewsbury	Whitchurch	1983 Quatt	Craven Arms
1984 Shrewsbury	Shifnal	1984 Shawbury	Forton
1985 Shrewsbury	Shifnal	1985 Forton	Frankton
1986 Shrewsbury	Wroxeter	1986 Overton	Bomere Heath
1987 Shrewsbury	Wern	1987 Frankton	G.K.N.
1988 Wroxeter	Newport	1988 Frankton	Much Wenlock
1989 Newport	Shrewsbury	1989 Colton Hall	Albrighton
1990 Shrewsbury	Shifnal	1990 B.S.F.	Colton Hall
1991 Newport	Wroxeter	1991 B.S.F.	Albrighton
1992 Wern	Shrewsbury	1992 Frankton	Colton Hall
1993 Wroxeter	Shifnal	1993 Cathedral	Newtown
1994 Wroxeter	Shrewsbury	1994 Welshpool	Albrighton
1995 Wroxeter	Shrewsbury	1995 Welshpool	Montgomery
DIVISION THREE		DIVISION THREE 'A'	
1976 Overton	Cae Glas	1992 Newtown	S'bury Hospitals
1977 B.S.F.	Prees		
1978 Frankton	Albrighton		
1979 Calverhall	Much Wenlock		
1980 Bomere Heath	Overton		
1981 Craven Arms	Shawbury		
1982 Quatt	Forton		
1983 Edgmond	Frankton		
1984 Bomere Heath	G.K.N.		
1985 Ellesmere	Fenns Bank		
1986 Much Wenlock	B.S.F.		
1987 Albrighton	M.E.B.		
1988 Cathedral	Bromfield		
1989 Prees	Shawbury		
1990 Tibberton	Bomere Heath		
1991 Cae Glas	Acton Reynald		
1992 Whittington	Shawbury		
1993 Llanidloes	Welshpool		
1994 Montgomery	S'bury Hospitals		
1995 Bomere Heath	Hanwood		
DIVISION FIVE		DIVISION FOUR	
1984 Tibberton	Frankton 'A'	1981 Forton	Quatt
1985 Newport 'A'	Tibberton	1982 G.K.N.	Edgmond
1986 Hanwood	Bomere Heath 'A'	1983 Hodnet	Acton Reynald
1987 Bridgnorth 3rd XI	Albrighton 2nd XI	1984 Harcourt	Cathedral
1988 Overton 2nd XI	Forton 2nd XI	1985 Calverhall	Dawley Phoenix
1989 Knockin	Hales & Warren	1986 Wellington 'A'	Tibberton
1990 Conover 2nd XI	Church Aston	1987 St. Georges 3rd XI	Alberbury
1991 No Division Five this season		1988 Acton Reynald	Bridgnorth 3rd XI
1992 No Division Five this season		1989 Hodnet	Quatt
1993 Bishops Castle	Craven Arms	1990 Hanwood	St. Georges 3rd XI
1994 Willey	Calverhall	1991 Whittington	Cound
1995 Hodnet	Edgmond	1992 Newtown	S'bury Hospitals
		1993 Knockin	Bromfield
		1994 Pontesbury	Broseley
		1995 Trysull & Seisdon	Cound
		DIVISION SIX	
		1988 Knockin	Warren
		1989 Hinstock	Conover 2nd XI
		1990 Bomere Heath 2nd XI	Wellington 4th XI

PREVIOUS YEARS' DIVISIONAL WINNERS/RUNNERS UP

Winners	Runners up
RESERVE DIVISION ONE	
1970 Newport	Rolls Royce
1971 Newport	Wern
1972 Wellington	Newport
1973 Newport	Wroxeter
1974 Bridgnorth	Newport
1975 Wellington	Shrewsbury
1976 Newport	Shrewsbury
1977 Shrewsbury	Wroxeter
1978 Bridgnorth	Wroxeter
1979 Shrewsbury	Whitchurch
1980 Whitchurch	Wellington
1981 Bridgnorth	Whitchurch
1982 Newport	Bridgnorth
1983 Shrewsbury	St. Georges
1984 Wern	Newport
1985 Wroxeter	Whitchurch
1986 St. Georges	Bridgnorth
1987 Shrewsbury	Newport
1988 Wroxeter	St. Georges
1989 Bridgnorth	St. Georges
1990 Shrewsbury	Shifnal
1991 Shifnal	St. Georges
1992 Wroxeter	Oswestry
1993 Wroxeter	Oswestry
1994 Shrewsbury	Oswestry
1995 Bridgnorth	Wroxeter
RESERVE DIVISION TWO	
1991 Wellington 3rd XI	Oswestry 3rd XI
1992 Frankton 2nd XI	Wellington 3rd XI
1993 St. Georges 3rd XI	Overton 2nd XI
1994 Frankton 2nd XI	Oswestry 3rd XI
1995 Oswestry 3rd XI	Welshpool 2nd XI
RESERVE DIVISION THREE	
1991 Shrewsbury 3rd XI	Bomere Heath 2nd XI
1992 Overton 2nd XI	S'bury Hospitals 2nd XI
1993 Welshpool 2nd XI	Newtown 2nd XI
1994 Whittington 2nd XI	Acton Reynald 2nd XI
1995 Conover 2nd XI	British Sugar 2nd XI
RESERVE DIVISION FOUR	
1991 Shifnal 3rd XI	Acton Reynald 2nd XI
1992 Welshpool 2nd XI	Llanidloes 2nd XI
1993 Whittington 2nd XI	British Sugar 2nd XI
1994 Cathedral 2nd XI	Oswestry 4th XI
1995 Broseley 2nd XI	Perkins 3rd XI

DIVISION ONE STATISTICS 1995

Final League Table

	P	W	D	A	L	Points
Wroxeter & Uppington	22	13	7	2	0	113
Shrewsbury	22	11	7	1	3	101
Bridgnorth	22	11	5	1	5	99
Perkins	22	9	8	0	5	88
St. Georges	22	7	10	2	3	85
* Wellington	22	10	3	3	6	74
Newport	22	7	7	1	7	62
Oswestry	22	5	5	2	10	45
Ludlow	22	4	7	1	10	39
* Whitchurch	22	3	9	1	9	35
Shifnal	22	3	7	0	12	33
* Wem	22	2	3	2	15	14

* 7 points deducted - failure to meet required over rate

Highs and Lows

Highest Total by Team :		
312-3	Bridgnorth v. Oswestry	8 July
Lowest Total by Team :		
47	Wem v. St. Georges	23 September

Batsmen Scoring Centuries (30)

139*	K. Sharp	Bridgnorth v. Shifnal	1 July
135	K. Sharp	Bridgnorth v. Oswestry	8 July
130	M. Kelton	St. Georges v. Wem	8 July
126	M. Kelton	St. Georges v. Whitchurch	24 June
125*	I. Payne	Oswestry v. Perkins	13 May
123*	M. Davies	Perkins v. Shrewsbury	8 July
121*	J. Foster	Shrewsbury v. Bridgnorth	5 August
121	M. Davidson	Newport v. Whitchurch	10 June
121	K. Sharp	Bridgnorth v. Wellington	6 May
118*	M. Davidson	Newport v. Shifnal	8 July
118	K. Parsons	Newport v. Whitchurch	26 August
113	A. Johnson	St. Georges v. Newport	20 May
108	A. Hurdley	Bridgnorth v. Oswestry	8 July
107*	C. Marlin	Wellington v. Wem	1 July
107	S. Azhar	St. Georges v. Bridgnorth	29 July
107	D. Van-Zyl	Wroxeter v. Shrewsbury	24 June
106	E. Middleton	Whitchurch v. Wroxeter	23 September
105	M. Arif	St. Georges v. Ludlow	15 July
104*	S. Hughes	Wroxeter v. Bridgnorth	12 August
103*	J. B. R. Jones	Wroxeter v. Wellington	26 August
102*	M. Arif	St. Georges v. Shifnal	6 May
102*	M. Davies	Perkins v. Oswestry	13 May
102*	J. Foster	Shrewsbury v. Wem	29 April
102	S. Gale	Shrewsbury v. Perkins	8 July
102	S. Hughes	Wroxeter v. Oswestry	1 July
101*	J. B. R. Jones	Wroxeter v. Newport	19 August
101	D. Elcock (Jnr.)	Ludlow v. Shrewsbury	22 July
101	I. Payne	Oswestry v. Wroxeter	1 July
100*	L. Brazier	St. Georges v. Ludlow	15 July
100	D. Van-Zyl	Wroxeter v. Shifnal	5 August

Bowlers Taking 7 Wickets or More (5)

N. Williams	8-62	Oswestry v. Shrewsbury	2 September
C. Ephraim	7-28	Ludlow v. Wem	19 August
B. Shantry	7-37	Perkins v. St. Georges	1 July
J. Phillips	7-54	Oswestry v. Shifnal	9 September
D. Hampton	7-65	Newport v. St. Georges	20 May

DIVISION ONE AVERAGES 1995

BATTING (qualification 10 innings, average over 36)

Name	Club	Innings	Not Out	Highest Score	Runs	Average
Bryan JONES	Wroxeter	13	5	103	660	82.50
K. SHARP	Bridgnorth	21	7	139*	1105	78.92
M. DAVIES	Perkins	19	6	123*	1000	76.92
D. HAMPTON	Newport	10	5	70	376	75.20
J. FOSTER	Shrewsbury	18	4	121*	866	61.85
B. MOSS	Wellington	10	8	33	113	56.50
S. HUGHES	Wroxeter	21	4	104*	881	51.82
Ed. HOME	Wroxeter	15	8	53	342	48.85
D. VAN ZYL	Wroxeter	15	4	107	537	48.81
M. TURNER	Bridgnorth	18	5	94	603	46.38
I. PAYNE	Oswestry	17	3	125*	638	45.57
M. KELTON	St. Georges	22	2	130	898	44.90
S. GALE	Shrewsbury	21	3	102	786	43.66
G. WALKER	Wellington	19	3	98	667	41.68
D. ELCOCK (Jnr.)	Ludlow	14	0	101	559	39.92
A. JOHNSON	St. Georges	20	4	113	617	38.56
E. MIDDLETON	Whitchurch	21	0	106	781	37.19
N. WANLESS	Oswestry	19	3	77	584	36.50
M. GILLISON	Oswestry	10	0	81	364	36.40

BOWLING (qualification 20 wickets, average under 22)

Name	Club	Overs	Maidens	Runs	Wickets	Average
I. LOCK	Bridgnorth	283.3	79	733	51	14.37
A. REEVE	St. Georges	200.3	35	673	46	14.64
M. MARVELL	Wroxeter	204.5	51	603	41	14.70
P. PRIDGEON	Wroxeter	218.4	45	740	45	16.44
B. SHANTRY	Perkins	174.2	24	547	32	17.09
J. PHILLIPS	Oswestry	253.2	45	919	51	18.00
S. CAINE	Bridgnorth	141.5	18	473	26	18.19
D. WILLIAMS	Shrewsbury	102	16	402	22	18.27
A. JOHNSON	St. Georges	177	42	588	29	20.27
A. BARNARD	Shrewsbury	247.2	57	636	31	20.51
P. TRIMBY	Shrewsbury	124.4	26	417	20	20.85
D. HAMPTON	Newport	150	22	629	29	21.68
D. VAN ZYL	Wroxeter	162.4	20	547	25	21.88

DIVISION TWO STATISTICS 1995

Final League Table

	P	W	D	A	L	Points
Welshpool	22	15	4	1	2	124
Montgomery	22	10	5	0	7	92
Llanidloes	22	11	6	1	4	90
Albrighton	22	11	6	1	4	90
Whittington	22	8	8	1	5	75
Forton	22	9	4	0	9	69
Cathedral	22	7	5	1	9	68
Frankton	22	6	8	1	7	65
Coton Hall	22	6	7	1	8	62
Shrewsbury Hospitals	22	4	6	0	12	43
British Sugar	22	3	6	1	12	27
Newtown	22	2	7	0	13	27

Highs and Lows

Highest Total by Team :		
368-2	Welshpool v. Newtown	5 August
Lowest Total by Team :		
45	Cathedral v. Coton Hall	15 July

Batsmen Scoring Centuries (14)

174	J. Cadwallader	Welshpool v. Newtown	5 August
154	N. Salisbury	Shrewsbury Hospitals v. British Sugar	17 June
140	B. Jones	Newtown v. British Sugar	1 July
125	M. Davies	Whittington v. British Sugar	5 August
114*	M. Gresham	Coton Hall v. Forton	26 August
113*	J. Cadwallader	Welshpool v. Frankton	19 August
109	P. Stevenson	Montgomery v. Newtown	19 August
108	M. Wright	Forton v. Frankton	1 July
107	I. Jones	Llanidloes v. Montgomery	24 June
106*	N. Salisbury	Shrewsbury Hospitals v. Forton	3 June
104*	D. Williams	Llanidloes v. British Sugar	6 May
104	A. Evans	Llanidloes v. Welshpool	26 August
101*	G. Chesters	Coton Hall v. Newtown	9 September
101	P. Rider	British Sugar v. Whittington	20 May

Bowlers Taking 7 Wickets or More (9)

R. Jones	8-44	Llanidloes v. Forton	8 July
S. Aston	7-11	Cathedral v. Whittington	16 September
R. Cadwallader	7-17	Welshpool v. Coton Hall	1 July
R. Cadwallader	7-27	Welshpool v. Frankton	3 June
J. Williams	7-38	Montgomery v. Forton	12 August
R. Cadwallader	7-43	Welshpool v. Llanidloes	10 June
S. Monk	7-48	Welshpool v. British Sugar	12 August
K. Finney	7-58	British Sugar v. Newtown	1 July
J. Edgerton	7-75	Coton Hall v. Frankton	6 May

DIVISION TWO AVERAGES 1995

BATTING (qualification 10 innings, average over 25)

Name	Club	Innings	Not Out	Highest Score	Runs	Average
J. CADWALLADER	Welshpool	20	6	174 *	1039	74.21
Bryan JONES	Newtown	16	2	140	811	57.92
N. SALISBURY	Shrewsbury Hospitals	14	2	154	691	57.58
P. BENNETT	Welshpool	17	6	99	616	56.00
R. CADWALLADER	Welshpool	11	5	68	258	43.00
P. STEVENSON	Montgomery	18	2	109	667	41.68
G. LITCHFIELD	Whittington	17	2	79	580	38.66
J. JAMES	Frankton	13	2	87	405	36.81
R. KINSEY	Montgomery	19	3	79	582	36.37
A. EVANS	Llanidloes	19	4	104	523	34.86
P. RIDER	British Sugar	20	1	101	619	32.57
G. CHESTERS	Coton Hall	16	3	101 *	421	32.38
T. RUDD	Newtown	15	2	62	415	31.92
Mike JONES	Llanidloes	15	5	76	309	30.90
Nick JONES	Llanidloes	20	4	83	486	30.37
S. ASTON	Cathedral	17	1	82	478	29.87
R. PIKE	Cathedral	10	1	58	263	29.22
A. HURFORD	Albrighton	17	3	61	401	28.64
M. GRESHAM	Coton Hall	15	1	114 *	392	28.00
T. CLARE	British Sugar	21	2	61	531	27.94
D. SHIMMONS	Albrighton	19	1	93	496	27.55
Stan DAVIES	Montgomery	18	4	64	380	27.14
Mark DAVIES	Forton	22	4	70 *	475	26.38
R. LATCHAM	Cathedral	13	1	94	304	25.33

BOWLING (qualification 20 wickets, average under 18)

Name	Club	Overs	Maidens	Runs	Wickets	Average
R. CADWALLADER	Welshpool	216.3	70	523	57	9.17
I. CADWALLADER	Welshpool	167	36	465	42	11.07
R. MARTINDALE	Cathedral	115.2	20	301	25	12.04
T. BARFOOT	Llanidloes	200.2	51	550	45	12.22
S. MONK	Welshpool	157.5	36	381	30	12.70
J. ROBERTS	Albrighton	201.4	66	462	36	12.83
R. KINSEY	Montgomery	338.2	90	843	64	13.17
S. ASTON	Cathedral	117.2	32	343	26	13.19
Elwyn JONES	Frankton	210.5	30	656	46	14.26
L. BAILEY	Cathedral	123.2	23	389	27	14.40
N. PERKS	Welshpool	131	35	317	21	15.09
Don JONES	Forton	214.3	58	610	40	15.25
G. CHESTERS	Coton Hall	258.3	50	779	51	15.27
Rob JONES	Llanidloes	279.1	54	772	47	16.42
M. CARTWRIGHT	Albrighton	166.1	33	465	28	16.60
A. EVANS	Llanidloes	154.2	39	466	28	16.64
K. FINNEY	British Sugar	122.3	11	576	34	16.94
F. O'BRIEN	Whittington	147	21	481	28	17.17
S. LOCKLEY	Whittington	74.5	2	348	20	17.40
A. JACKSON	Shrewsbury Hospitals	265.1	56	869	49	17.73

DIVISION THREE STATISTICS 1995

Final League Table

	P	W	D	A	L	Points
Bomere Heath	22	13	6	0	3	103
Hanwood	22	11	6	0	5	95
Broseley	22	9	9	1	3	88
Bromfield	22	9	6	3	4	77
Much Wenlock	22	6	9	3	4	76
Tibberton	22	8	5	0	9	73
Knockin & Kinnerley	22	9	4	2	7	72
Pontesbury	22	6	3	1	12	55
Iscoyd & Fenns Bank	22	6	4	1	11	54
Cae Glas	22	6	5	1	10	53
Overton	22	4	6	2	10	44
Acton Reynald	22	4	5	0	13	37

Highs and Lows

Highest Total by Team :			
292-7	Hanwood v. Broseley	5 August	
Lowest Total by Team :			
50	Tibberton v. Bomere Heath	15 July	

Batsmen Scoring Centuries (4)

127*	J. Coulson	Broseley v. Tibberton	2 September
111*	R. Lawrenson	Overton v. Broseley	6 May
107*	N. Dixon	Tibberton v. Overton	29 July
100*	A. Harris	Hanwood v. Cae Glas	24 June

Bowlers Taking 7 Wickets or More (11)

R. Firmstone	9-45	Broseley v. Iscoyd & Fenns Bank	10 June
P. Price	8-39	Hanwood v. Acton Reynald	6 May
J. O'Keefe	8-44	Bomere Heath v. Pontesbury	1 July
P. Price	7-23	Hanwood v. Pontesbury	13 May
I. Moult	7-24	Cae Glas v. Pontesbury	23 September
I. Jones	7-25	Pontesbury v. Cae Glas	23 September
S. O'Callaghan	7-25	Bomere Heath v. Tibberton	15 July
I. Hughes	7-29	Bomere Heath v. Cae Glas	12 August
N. Crump	7-53	Bromfield v. Bomere Heath	26 August
R. Lawrenson	7-63	Overton v. Iscoyd & Fenns Bank	17 June
T. Cartwright	7-68	Tibberton v. Iscoyd & Fenns Bank	24 June

DIVISION THREE AVERAGES 1995

BATTING (qualification 10 innings, average over 26)

Name	Club	Innings	Not Out	Highest Score	Runs	Average
L. LEVER	Overton	18	12	85*	378	63.00
J. MARTIN	Bomere Heath	17	7	79*	507	50.70
T. BEDDOW	Tibberton	17	4	99*	579	46.07
A. CRUMP	Bromfield	15	8	61*	281	40.14
M. PINFOLD	Broseley	15	2	90	475	36.53
C. LEWIS	Much Wenlock	16	1	83	539	35.93
J. LARKING	Much Wenlock	17	0	80	581	34.17
R. MORRIS	Pontesbury	20	2	88*	615	34.16
E. McCARNEY	Knockin	18	2	85*	546	34.12
S. OAKLEY	Hanwood	20	2	66*	599	33.27
Ron LLOYD	Broseley	14	4	73*	322	32.20
P. PRICE	Hanwood	20	3	94	536	31.52
N. PROCTOR	Bomere Heath	19	2	66	530	31.17
R. LAWRENSON	Overton	19	2	111*	520	30.58
Jon LLOYD	Broseley	20	3	58*	513	30.17
M. RICHARDS	Iscoyd & Fenns Bank	14	3	60*	330	30.00
R. BYWATER	Iscoyd & Fenns Bank	19	1	82	530	29.44
P. LEE	Bromfield	13	2	78*	296	26.90
M. PARRY	Knockin	17	3	45	370	26.42
P. JOHNSON	Hanwood	15	1	74	365	26.07

BOWLING (qualification 20 wickets, average under 17)

Name	Club	Overs	Maidens	Runs	Wickets	Average
A. PERRY	Bomere Heath	161.2	49	412	37	11.13
J. O'KEEFE	Bomere Heath	189.1	42	555	48	11.56
P. PRICE	Hanwood	321	68	835	65	12.84
R. MORRIS	Pontesbury	95.1	22	301	23	13.08
P. MAPP	Iscoyd & Fenns Bank	99.2	24	263	20	13.15
A. CRUMP	Bromfield	318.5	86	772	57	13.54
M. MURDOCH	Broseley	172.4	27	515	38	13.55
T. ELLIS	Bromfield	107	32	282	20	14.10
I. HUGHES	Bomere Heath	167.1	37	526	37	14.21
R. FIRMSTONE	Broseley	165	30	496	34	14.58
J. MARTIN	Bomere Heath	155.2	32	396	27	14.66
C. LEWIS	Much Wenlock	190.4	32	627	41	15.29
I. JONES	Pontesbury	270.5	56	780	50	15.60
P. ELSON	Iscoyd & Fenns Bank	159.3	31	473	30	15.76
S. O'CALLAGHAN	Bomere Heath	174.3	44	479	30	15.96
H. EVANS	Pontesbury	158.3	50	356	22	16.18
M. OGLETHORPE	Knockin	235.4	46	719	44	16.34
A. JERRAM	Cae Glas	88.2	10	360	22	16.36
M. WYNNE	Cae Glas	124	24	353	21	16.80

DIVISION FOUR STATISTICS 1995

Final League Table

	P	W	D	A	L	Points
Trysull & Seisdon	22	17	1	1	3	124
Cound	22	16	2	0	4	117
Telford Moslems	22	12	4	1	5	104
Ellesmere	22	13	1	0	8	96
Alberbury	22	11	4	1	6	88
Willey	22	11	2	3	6	84
Harcourt	22	10	3	2	7	76
Quatt	22	10	0	1	11	71
Craven Arms	22	6	2	0	14	51
Calverhall	22	4	1	1	16	30
Prees	22	3	2	1	16	26
Bishop's Castle	22	1	2	1	18	12

Highs and Lows

Highest Total by Team :			
368-5	Telford Moslems v. Bishops Castle	8 July	
Lowest Total by Team :			
18	Calverhall v. Ellesmere	27 May	

Batsmen Scoring Centuries (14)

228	M. Fiaz	Telford Moslems v. Bishops Castle	8 July
216	M. Fiaz	Telford Moslems v. Calverhall	29 July
176	R. Edwards	Quatt v. Calverhall	9 September
156*	K. Gullfraz	Telford Moslems v. Alberbury	5 August
133	M. Fiaz	Telford Moslems v. Craven Arms	26 August
124*	M. Fiaz	Telford Moslems v. Calverhall	13 May
110*	M. Fiaz	Telford Moslems v. Prees	2 September
108*	M. Jones	Alberbury v. Ellesmere	19 August
108	M. Fiaz	Telford Moslems v. Bishops Castle	23 September
108	A. Griffiths	Cound v. Calverhall	6 May
105*	A. Little	Alberbury v. Quatt	1 July
103*	M. Ruff	Cound v. Prees	26 August
102	K. Pervez	Telford Moslems v. Bishops Castle	8 July
100*	A. Parry	Cound v. Prees	10 June

Bowlers Taking 7 Wickets or More (12)

M. Farooq	8-33	Telford Moslems v. Craven Arms	10 June
A. Darlington	7-9	Ellesmere v. Calverhall	27 May
M. Harvey	7-21	Trysull & Seisdon v. Ellesmere	17 June
T. Corkindale	7-28	Trysull & Seisdon v. Prees	5 August
B. Jones	7-33	Quatt v. Calverhall	24 June
A. Parry	7-33	Cound v. Trysull & Seisdon	27 May
M. Thomas	7-35	Alberbury v. Bishops Castle	27 May
A. Parry	7-41	Cound v. Ellesmere	23 September
A. Parry	7-43	Cound v. Craven Arms	3 June
A. Parry	7-49	Cound v. Ellesmere	8 July
G. Struggles	7-54	Ellesmere v. Alberbury	3 June
E. Smith	7-67	Craven Arms v. Trysull & Seisdon	13 May

DIVISION FOUR AVERAGES 1995

BATTING (qualification 10 innings, average over 25)

Name	Club	Innings	Not Out	Highest Score	Runs	Average
K. GULFRAZ	Telford Moslems	14	7	156*	546	78.00
M. FIAZ	Telford Moslems	20	3	228	1300	76.47
T. CORKINDALE	Trysull & Seisdon	14	6	95*	395	49.37
R. HOLLOWAY	Alberbury	17	6	91*	490	44.54
Mark JONES	Alberbury	20	4	108*	634	39.62
K. PERVEZ	Telford Moslems	10	1	102	338	37.55
A. GRIFFITHS	Cound	20	4	108	590	36.87
R. EDWARDS	Quatt	14	0	176	486	34.71
W. HOPKINS	Trysull & Seisdon	15	4	71*	379	34.45
A. PARRY	Cound	18	2	100*	538	33.62
A. MORRIS	Trysull & Seisdon	17	1	83	534	33.37
Barry JONES	Quatt	18	7	61*	357	32.45
S. OAKLEY	Harcourt	14	3	65	348	31.63
D. LEWIS	Alberbury	14	3	87*	344	31.27
R. TOMKINS	Cound	12	4	50*	235	29.37
N. SAVAGE	Alberbury	10	1	87	262	29.11
R. THOMAS	Ellesmere	12	0	90	539	28.25
Ivor DAVIES	Craven Arms	14	2	70	321	26.75
D. FARRELL	Harcourt	13	2	83*	287	26.09
C. BATKIN	Prees	18	2	54	417	26.06
A. DARLINGTON	Ellesmere	21	5	69	407	25.43

BOWLING (qualification 20 wickets, average under 14)

Name	Club	Overs	Maidens	Runs	Wickets	Average
T. CORKINDALE	Trysull & Seisdon	315.3	91	712	81	8.79
M. FIAZ	Telford Moslems	136.5	32	362	40	9.50
M. HARVEY	Trysull & Seisdon	154.3	43	438	47	9.74
D. FARRELL	Harcourt	91.1	19	288	28	10.28
M. SUMNER	Calverhall	96	21	303	29	10.44
G. EDWARDS	Willey	144.3	30	339	31	10.93
A. LITTLE	Alberbury	170.1	35	494	45	10.97
E. HALL	Willey	134.1	20	445	40	11.12
A. PARRY	Cound	335.3	84	931	82	11.35
G. STRUGGLES	Ellesmere	173.3	52	434	37	11.72
J. BENNETT	Ellesmere	237.4	61	644	54	11.92
M. THOMAS	Alberbury	99.3	18	336	28	12.00
D. CASLIN	Craven Arms	181.4	75	436	36	12.11
G. BARKER	Willey	66.2	11	283	25	12.12
C. PARRY	Ellesmere	109.3	27	302	23	13.13
S. HUMPHREYS	Harcourt	245.2	44	654	49	13.34
E. SMITH	Craven Arms	336.4	88	895	67	13.35
Barry JONES	Quatt	292.4	64	818	59	13.86

DIVISION FIVE STATISTICS 1995

Final League Table

	P	W	D	A	L	Points
Hodnet	22	16	2	1	3	119
Edgmond	22	16	1	0	5	117
Glynwed	22	14	2	2	4	108
Church Stretton	22	12	3	1	6	100
Church Aston	22	12	3	1	6	91
N.A.L.G.O.	22	9	4	1	8	73
Condover	22	7	7	1	7	72
M.E.B.	22	8	1	0	13	60
Guilfield	22	7	0	2	13	51
Hinstock	22	7	4	1	10	51
Chelmarsh	22	3	0	1	18	22
Lilleshall	22	0	1	2	19	2

Highs and Lows

Highest Total by Team :			
310-5	Condover v. N.A.L.G.O.	6 May	
Lowest Total by Team :			
25	Church Stretton v. Glynwed	9 September	

Batsmen Scoring Centuries (9)

145	P. Davies	Glynwed v. Lilleshall	26 August
141	N. Barratt	Condover v. N.A.L.G.O.	6 May
118	P. Davies	Glynwed v. M.E.B.	29 July
117*	D. Chilcott	Edgmond v. Church Stretton	12 August
111*	D. Chilcott	Edgmond v. Hinstock	24 June
103*	D. Brown	Hinstock v. N.A.L.G.O.	12 August
101*	N. Humphries	Hodnet v. Lilleshall	22 July
100*	J. Munro	Condover v. N.A.L.G.O.	22 July
100	M. Griffiths	Condover v. Hodnet	13 May

Bowlers Taking 7 Wickets or More (21)

B. Managh	9-29	Hodnet v. N.A.L.G.O.	19 August
A. Davies	8-21	Glynwed v. Guilsfield	12 August
B. Managh	8-24	Hodnet v. Guilsfield	23 September
Rob Shingler	8-25	Guilsfield v. Chelmarsh	29 July
A. Lloyd	8-28	Guilsfield v. Church Aston	24 June
A. Davies	8-33	Glynwed v. Lilleshall	10 June
J. Mackereth	8-34	Condover v. Chelmarsh	19 August
J. Boyce	8-50	Glynwed v. Condover	2 September
L. Woodcock	8-92	Hinstock v. M.E.B.	8 July
S. Byrne	7-11	Hinstock v. Lilleshall	2 September
M. Parton	7-17	Edgmond v. Lilleshall	29 June
M. Hall	7-28	N.A.L.G.O. v. Chelmarsh	24 June
T. Booth	7-31	Edgmond v. Condover	20 May
N. Cook	7-31	Chelmarsh v. Guilsfield	13 May
J. Monroe	7-34	Condover v. Guilsfield	26 August
B. Managh	7-35	Hodnet v. Hinstock	26 August
D. Adams	7-37	M.E.B. v. Lilleshall	5 August
R. Grisman	7-38	Church Aston v. Lilleshall	1 July
M. Parton	7-50	Edgmond v. M.E.B.	16 September
M. Jones	7-59	Hodnet v. Glynwed	15 July
Rup. Shingler	7-60	Guilsfield v. Hinstock	5 August

DIVISION FIVE AVERAGES 1995

BATTING (qualification 10 innings, average over 25)

Name	Club	Innings	Not Out	Highest Score	Runs	Average
R. EVANS (Snr.)	Church Stretton	18	11	73*	541	77.28
D. CHILCOTT	Edgmond	13	3	117*	499	49.90
B. MANAGH	Hodnet	11	4	77	329	47.00
N. BARRATT	Condover	18	2	141	726	45.37
M. GRIFFITHS	Condover	14	2	100	518	43.16
R. GRISMAN	Church Aston	16	-	92	661	41.31
R. EVANS (Jnr.)	Church Stretton	16	4	55*	436	36.33
P. ROSE	Hinstock	13	6	65	241	34.42
N. HUMPHRIES	Hodnet	18	4	101*	463	33.07
R. HALL	N.A.L.G.O.	19	7	67*	394	32.83
M. JONES	Hodnet	16	2	82*	437	31.21
M. MOTTRAM	Condover	13	3	67*	301	30.10
R. DAVIES	Hodnet	12	3	63*	268	29.77
P. DAVIES	Glynwed	21	1	145	579	28.95
D. BURTON	N.A.L.G.O.	17	1	99	452	28.25
C. BOTT	Church Aston	15	2	67	361	27.76
M. TURNER	Church Aston	20	1	67	520	27.36
T. WARWICK	Hodnet	13	2	50	293	26.63
M. PARTON	Edgmond	14	3	51*	284	25.81
D. GWILLIAM	Church Stretton	20	1	91*	479	25.21

BOWLING (qualification 20 wickets, average under 15)

Name	Club	Overs	Maidens	Runs	Wickets	Average
B. MANAGH	Hodnet	211.4	83	413	57	7.45
N. HUMPHRIES	Hodnet	149	56	326	40	8.15
A. DAVIES	Glynwed	141.5	26	444	47	9.44
R. GRISMAN	Church Aston	153.3	28	406	42	9.66
J. BOYCE	Glynwed	293.4	86	673	68	9.89
S. OWEN	Hodnet	152.5	35	367	37	9.91
M. PARTON	Edgmond	366.5	105	858	84	10.21
B. TAIT	Edgmond	82.2	27	206	20	10.30
R. EVANS (Jnr.)	Church Stretton	249.5	62	550	52	10.57
A. MORRIS	Church Stretton	213	45	572	50	11.44
C. BRAMWELL	Glynwed	95.3	13	292	24	12.16
T. BOOTH	Edgmond	247.1	64	583	46	12.67
J. MACKERETH	Condover	231.4	55	599	47	12.74
Rup. SHINGLER	Guilsfield	192.3	48	512	38	13.47
R. HUCKFIELD	Church Aston	108.3	21	361	26	13.88
A. LLOYD	Guilsfield	101.4	22	288	27	14.37
D. MUMFORD	Church Aston	147	20	522	36	14.50
J. PRICE	Chelmarsh	86	16	320	22	14.54
V. JORDAN	M.E.B.	115.4	28	295	20	14.75
Rob SHINGLER	Guilsfield	230.4	42	683	46	14.84
E. BRAYNE	Church Stretton	134.5	30	358	24	14.91

RESERVE DIVISION ONE STATISTICS 1995

Final League Table

	P	W	D	A	L	Points
Bridgnorth	22	15	4	3	0	123
Wroxeter & Uppington	22	8	9	2	3	90
Shrewsbury	22	10	7	0	5	86
Ludlow	22	11	3	2	6	85
Perkins	22	7	8	2	5	79
St. Georges	22	9	7	0	6	78
Oswestry	22	7	7	0	8	66
Wellington	22	7	7	0	8	62
Newport	22	7	2	1	12	55
Shifnal	22	4	6	3	9	47
Whitchurch	22	4	2	2	14	32
Wem	22	2	4	1	15	21

Highs and Lows

Highest Total by Team :		
350-4	Bridgnorth v. Wellington	22 July
Lowest Total by Team :		
28	St. Georges v. Shrewsbury	26 August

Batsmen Scoring Centuries (23)

200*	G. Thompson	Bridgnorth v. Wellington	22 July
141	G. Thompson	Bridgnorth v. Wroxeter & Uppington	27 May
128*	R. Genner	Ludlow v. Shifnal	17 June
128	C. Brayn	Wellington v. St. Georges	27 May
126	R. L. Burton	Wroxeter & Uppington v. Wellington	26 August
120	C. Brayn	Wellington v. Wem	1 July
119*	P. Evans	Shifnal v. St. Georges	6 May
118*	S. Down	Whitchurch v. Shifnal	27 May
117	A. Meredith	Ludlow v. Wroxeter & Uppington	13 May
114	B. Jones	Oswestry v. Newport	22 July
113*	P. Angeloff	St. Georges v. Wem	8 July
112*	C. Brayn	Wellington v. Perkins	24 June
112*	M. Griffiths	Perkins v. Shifnal	19 August
108	P. Bainbridge	Newport v. Shifnal	8 July
106	M. Tooze	Whitchurch v. Wem	29 July
105	I. Williams	Wem v. Bridgnorth	2 September
104	S. Ingram	Perkins v. Oswestry	29 July
103*	T. Hadfield	Wellington v. Perkins	24 June
101	P. Angeloff	St. Georges v. Wroxeter & Uppington	2 September
101	W. E. Davies	Shrewsbury v. Shifnal	29 July
100*	A. Meredith	Ludlow v. Perkins	12 August
100*	I. Middleton	Perkins v. Shifnal	19 August
100*	S. Pugh	Bridgnorth v. Newport	29 April

Bowlers Taking 7 Wickets or More (5)

S. Johnson	9-31	St. Georges v. Wem	23 September
R. Chapman	7-44	Shrewsbury v. Oswestry	2 September
T. Fern	7-54	Wroxeter & Uppington v. Oswestry	1 July
L. Parton	7-59	Wellington v. Shifnal	15 July
R. Moores	7-79	Bridgnorth v. Ludlow	9 September

RESERVE DIVISION ONE AVERAGES 1995

BATTING (qualification 10 innings, average over 32)

Name	Club	Innings	Not Out	Highest Score	Runs	Average
G. THOMPSON	Bridgnorth	16	4	200*	1125	93.75
S. PUGH	Bridgnorth	11	6	100*	387	77.40
I. MIDDLETON	Perkins	12	4	100*	550	68.75
C. BRAYN	Wellington	17	4	128	842	64.76
P. EVANS	Shifnal	10	3	119*	446	63.71
A. McLAUGHLAN	Shifnal	12	5	83*	351	50.14
A. MEREDITH	Ludlow	19	1	100*	830	46.11
P. ANGELOFF	St. Georges	12	1	113*	481	43.72
S. VELLA	Shrewsbury	11	3	86	309	38.62
I. GILLESPIE	Shrewsbury	11	3	86	307	38.37
P. BAINBRIDGE	Newport	11	1	108	364	36.40
M. PIKE	Wroxeter & Uppington	12	1	82	375	34.09
R. GENNER	Ludlow	19	2	128*	573	33.70
T. BALL	Shrewsbury	18	2	83*	532	33.25
D. FOWLES	Whitchurch	16	0	86	469	33.06
E. MULLARD	Bridgnorth	12	2	65*	327	32.70
K. FOWLER	Wellington	20	5	83*	468	32.53
M. BULLOCK	Shifnal	15	3	66	390	32.50
N. MEREDITH	Ludlow	15	0	70	485	32.33
S. HAYLETT	Wroxeter & Uppington	17	1	60*	513	32.06

BOWLING (qualification 20 wickets, average under 20)

Name	Club	Overs	Maidens	Runs	Wickets	Average
R. MOORES	Bridgnorth	192	30	656	46	14.26
T. LUCK	Whitchurch	135.5	24	465	29	16.03
H. BANKS	Shrewsbury	191	33	584	35	16.68
R. JONES	Wroxeter & Uppington	284	79	835	46	18.15
T. FERN	Wroxeter & Uppington	164.4	27	547	30	18.23
R. CHAPMAN	Shrewsbury	211.3	38	701	38	18.44
K. DAVIES	Wellington	178.4	45	639	33	19.36
J. WILLIAMS	Wroxeter & Uppington	155	43	489	25	19.56
G. ROBERTS	Oswestry	189.5	17	668	34	19.64
S. JOHNSON	St. Georges	229.3	41	719	36	19.99

RESERVE DIVISION TWO STATISTICS 1995

Final League Table

	P	W	D	A	L	Points
Oswestry 3rd XI	22	15	2	1	4	108
Welshpool 2nd XI	22	12	7	1	2	108
Shrewsbury 3rd XI	22	14	1	1	6	104
Bridgnorth 3rd XI	22	9	5	2	6	79
St. Georges 3rd XI	22	9	5	1	7	74
Frankton 2nd XI	22	7	7	0	8	71
Albrighton 2nd XI	22	8	4	1	9	63
Whittington 2nd XI	22	7	4	1	10	60
Wellington 3rd XI	22	7	7	0	8	59
Acton Reynald 2nd XI	22	5	8	0	9	58
Shrewsbury Hospitals 2nd XI	22	6	4	0	12	52
Newtown 2nd XI	22	2	0	0	20	14

Highs and Lows

Highest Total by Team : 303-5	Acton Reynald 2nd XI v. Newtown 2nd XI	12 August
Lowest Total by Team : 34	Albrighton 2nd XI v. Frankton 2nd XI	27 May
34	Bridgnorth 3rd XI v. Whittington 2nd XI	20 May

Batsmen Scoring Centuries (9)

162	P. Martin	Wellington 3rd XI v. Shrewsbury Hospitals 2nd XI	12 August
137	I. Suckley	Frankton 2nd XI v. Whittington 2nd XI	19 August
131*	D. Steepe	Oswestry 3rd XI v. St. Georges 3rd XI	29 April
130*	D. Reynolds	Shrewsbury 3rd XI v. St. Georges 3rd XI	13 May
130*	J. Weston	Acton Reynald 2nd XI v. Whittington 2nd XI	8 July
128*	P. Taylor	St. Georges 3rd XI v. Shrewsbury 3rd XI	13 May
114*	M. Digwood	Welshpool 2nd XI v. Newtown 2nd XI	20 May
106*	R. Beaman	Oswestry 3rd XI v. Shrewsbury Hospitals 2nd XI	5 August
100	M. Miles	Wellington 3rd XI v. Acton Reynald 2nd XI	20 May

Bowlers Taking 7 Wickets or More (14)

R. Edwards	9-26	Frankton 2nd XI v. Albrighton 2nd XI	27 May
M. Cadwallader	8-34	Welshpool 2nd XI v. Shrewsbury Hospitals 2nd XI	6 May
D. Ashlin	7-10	Whittington 2nd XI v. Bridgnorth 3rd XI	20 May
C. Greensall	7-13	St. Georges 3rd XI v. Wellington 3rd XI	9 September
A. Pearce	7-24	Shrewsbury 3rd XI v. Newtown 2nd XI	29 April
A. Williams	7-25	Welshpool 2nd XI v. Acton Reynald 2nd XI	15 July
N. Edwards	7-30	Wellington 3rd XI v. Shrewsbury Hospitals 2nd XI	12 August
I. Lock	7-35	Bridgnorth 3rd XI v. Frankton 2nd XI	29 April
D. Williams	7-37	Bridgnorth 3rd XI v. Shrewsbury 3rd XI	26 August
G. Cooper	7-40	Albrighton 2nd XI v. Oswestry 3rd XI	26 August
I. Ward	7-46	St. Georges 3rd XI v. Whittington 2nd XI	12 August
C. Greensall	7-48	St. Georges 3rd XI v. Shrewsbury Hospitals 2nd XI	17 June
R. Beaman	7-54	Oswestry 3rd XI v. Welshpool 2nd XI	8 July
R. Edwards	7-78	Frankton 2nd XI v. Bridgnorth 3rd XI	15 July

RESERVE DIVISION TWO AVERAGES 1995

BATTING (qualification 10 innings, average over 26)

Name	Club	Innings	Not Out	Highest Score	Runs	Average
D. REYNOLDS	Shrewsbury 3rd XI	11	3	130*	445	55.62
J. WESTON	Acton Reynald 2nd XI	11	1	130*	489	48.90
S. MAITRA	Oswestry 3rd XI	11	6	39*	210	42.00
D. PARRY	Wellington 3rd XI	17	2	76	621	41.40
D. BUDGEN	Welshpool 2nd XI	19	3	98	609	38.06
P. WOOD	Frankton 2nd XI	16	1	98	548	36.53
R. EVANS	Bridgnorth 3rd XI	15	2	53*	458	35.23
R. BEAMAN	Oswestry 3rd XI	17	3	106*	486	34.71
P. TAYLOR	St. Georges 3rd XI	13	2	128*	368	33.45
J. RALPH	Welshpool 2nd XI	13	6	50*	226	32.28
M. ROBINSON	Oswestry 3rd XI	16	2	79	432	30.87
M. TANNER	Bridgnorth 3rd XI	13	1	72	363	30.25
A. CADWALLADER	Shrews Hosp 2nd XI	19	5	85	407	29.07
P. RUSCOE	St. Georges 3rd XI	13	4	86	256	28.44
T. EVANS	Bridgnorth 3rd XI	14	2	59*	332	27.66
R. PRICE	St. Georges 3rd XI	19	3	85*	432	27.00
G. CHAPMAN	Welshpool 2nd XI	18	0	52	471	26.16

BOWLING (qualification 20 wickets, average under 18)

Name	Club	Overs	Maidens	Runs	Wickets	Average
S. WESTON	Bridgnorth 3rd XI	86.1	18	242	24	10.08
R. TERRY	Whittington 2nd XI	135.3	35	311	30	10.36
T. HUGHES	Bridgnorth 3rd XI	177.3	38	472	38	12.42
D. PARRY	Wellington 3rd XI	147.1	29	412	32	12.87
A. MORRIS	Oswestry 3rd XI	239.4	67	580	45	12.88
M. WILLIAMS	Shrewsbury 3rd XI	188.1	45	510	39	13.07
M. CADWALLADER	Welshpool 2nd XI	318.3	69	853	62	13.75
C. BULLOCK	Albrighton 2nd XI	194.1	52	529	38	13.92
M. BRUNT	Whittington 2nd XI	140.3	33	368	26	14.15
I. WARD	St. Georges 3rd XI	137.5	38	355	25	14.20
A. PEARCE	Shrewsbury 3rd XI	177.4	30	587	41	14.31
P. JONES	Newtown 2nd XI	187.3	42	447	30	14.90
M. CADWALLADER	Shrews Hosp 2nd XI	137	36	326	22	15.04
G. COOPER	Albrighton 2nd XI	185.2	47	523	34	15.38
A. WILLIAMS	Welshpool 2nd XI	243.1	48	711	42	16.92
A. CADWALLADER	Shrews Hosp 2nd XI	237.1	53	684	40	17.10
A. LEGGATT	Oswestry 3rd XI	212.2	71	532	31	17.16
R. EDWARDS	Frankton 2nd XI	205	34	637	37	17.21

RESERVE DIVISION THREE STATISTICS 1995

Final League Table

	P	W	D	A	L	Points
Condover 2nd XI	22	16	3	1	2	128
British Sugar 2nd XI	22	14	5	0	3	113
Willey 2nd XI	22	11	1	1	9	82
Forton 2nd XI	22	7	6	1	8	76
Llanidloes 2nd XI	22	9	3	2	8	70
Much Wenlock 2nd XI	22	8	5	3	6	68
Cae Glas 2nd XI	22	9	1	2	10	66
Cathedral 2nd XI	22	8	4	1	9	59
Oswestry 4th XI	22	7	1	1	13	54
Ludlow 3rd XI	22	5	4	3	10	51
Shifnal 3rd XI	22	5	3	1	13	46
Wellington 4th XI	22	3	6	2	11	30

Higs and Lows

Highest Total by Team : 304-3	Forton 2nd XI v. British Sugar 2nd XI	2 September
Lowest Total by Team : 29	Cae Glas 2nd XI v. Willey 2nd XI	29 April

Batsmen Scoring Centuries (11)

171*	R. Spooncer	Forton 2nd XI v. British Sugar 2nd XI	2 September
154*	N. Gittens	British Sugar 2nd XI v. Wellington 4th XI	13 May
145*	R. Morris	Condover 2nd XI v. British Sugar 2nd XI	12 August
145	D. Parton	British Sugar 2nd XI v. Willey 2nd XI	10 June
126	T. Tate	Ludlow 3rd XI v. Shifnal 3rd XI	12 August
114*	S. Jones	Willey 2nd XI v. British Sugar 2nd XI	10 June
113	R. Spooncer	Forton 2nd XI v. Shifnal 3rd XI	5 August
110	D. Parton	British Sugar 2nd XI v. Shifnal 3rd XI	3 June
107	D. Owens	Llanidloes 2nd XI v. British Sugar 2nd XI	22 July
105	A. Heslop	Forton 2nd XI v. Cathedral 2nd XI	19 August
101*	D. Parton	British Sugar 2nd XI v. Willey 2nd XI	26 August

Bowlers Taking 7 Wickets or More (11)

T. Hyde	9-88	Willey 2nd XI v. Condover 2nd XI	22 July
R. Swallow	8-56	Llanidloes 2nd XI v. Oswestry 4th XI	13 May
D. Milner	8-60	Oswestry 4th XI v. British Sugar 2nd XI	23 September
S. Turner	7-17	Much Wenlock 2nd XI v. Oswestry 4th XI	22 July
D. Milner	7-24	Oswestry 4th XI v. Wellington 4th XI	20 May
D. Williams	7-24	Cae Glas 2nd XI v. Llanidloes 2nd XI	10 June
R. Teece	7-28	Much Wenlock 2nd XI v. Cae Glas 2nd XI	19 August
S. Rumble	7-29	Shifnal 3rd XI v. Wellington 4th XI	1 July
S. Harrison	7-36	Much Wenlock 2nd XI v. Willey 2nd XI	9 September
R. Khan	7-50	British Sugar 2nd XI v. Cae Glas 2nd XI	5 August
M. Eassom	7-55	Forton 2nd XI v. Willey 2nd XI	12 August

RESERVE DIVISION THREE AVERAGES 1995

BATTING (qualification 10 innings, average over 25)

Name	Club	Innings	Not Out	Highest Score	Runs	Average
R. MORRIS	Condover 2nd XI	12	1	145*	546	49.63
D. PARTON	British Sugar 2nd XI	12	1	145	529	48.09
R. SPOONCER	Forton 2nd XI	20	3	171*	711	44.43
D. BEVAN	Condover 2nd XI	17	5	79*	523	43.58
Carl STARLING	British Sugar 2nd XI	12	4	83*	309	38.62
Peter STARLING	British Sugar 2nd XI	15	5	88*	346	34.60
M. WHITNEY	British Sugar 2nd XI	18	4	87	468	33.42
G. COLES	British Sugar 2nd XI	18	1	70*	556	32.70
D. OWEN	Llanidloes 2nd XI	20	0	107	645	32.25
I. HIGGS	Much Wenlock 2nd XI	13	3	77	320	32.00
S. JONES	Willey 2nd XI	16	2	114*	439	31.35
P. THORNTON	British Sugar 2nd XI	14	2	78	374	31.16
M. JOHNSON	Condover 2nd XI	13	4	51*	274	30.44
B. L. JONES	Llanidloes 2nd XI	11	1	58	266	26.60
A. HESLOP	Forton 2nd XI	20	1	105	489	25.73
J. GOUGH	Cathedral 2nd XI	12	5	38	179	25.70

BOWLING (qualification 20 wickets, average under 20)

Name	Club	Overs	Maidens	Runs	Wickets	Average
M. JOHNSON	Condover 2nd XI	164	44	332	39	8.51
G. PUGH	Llanidloes 2nd XI	86.3	19	244	21	11.61
T. HYDE	Willey 2nd XI	279.3	81	712	61	11.70
D. WILLIAMS	Cae Glas 2nd XI	138.3	36	364	30	12.13
J. MCGREA	Condover 2nd XI	186	35	486	38	12.78
R. WOLF	Cathedral 2nd XI	164.1	28	470	36	13.05
K. HIPKISS	Cae Glas 2nd XI	170.3	46	440	32	13.75
D. PUGH	Condover 2nd XI	192	44	458	33	13.87
D. OWEN	Llanidloes 2nd XI	171.3	37	473	34	13.91
S. JOHNSON	Condover 2nd XI	132.4	28	394	28	14.07
R. SWALLOW	Llanidloes 2nd XI	209.1	43	667	47	14.19
D. MILNER	Oswestry 4th XI	347	69	942	66	14.27
S. BARKER	Condover 2nd XI	100	16	332	23	14.43
P. MOUNTFORD	Shifnal 3rd XI	167	36	427	27	15.81
S. MEREDITH	Cathedral 2nd XI	137.5	41	334	21	15.90
B. LEWIS	Llanidloes 2nd XI	208.3	41	650	38	17.10
P. EVANS	Cathedral 2nd XI	231.4	49	703	39	18.02
A. COLEMAN	Cae Glas 2nd XI	129	22	363	20	18.15
J. CLARKE	Oswestry 4th XI	157.4	32	500	27	18.51
Carl STARLING	British Sugar 2nd XI	175.3	22	671	34	19.73

RESERVE DIVISION FOUR STATISTICS 1995

Final League Table

	P	W	D	A	L	Points
Broseley 2nd XI	22	15	4	0	3	120
Perkins 3rd XI	22	17	0	0	5	119
Trysull & Seisdon 2nd XI	22	12	8	1	1	100
Pontesbury 2nd XI	22	12	2	1	7	91
Bomere Heath 2nd XI	22	10	2	1	9	79
Alberbury 2nd XI	22	10	4	0	8	75
Bromfield 2nd XI	22	9	1	1	11	69
Iscoyd & Fenns Bank 2nd XI	22	8	3	2	9	67
Cound 2nd XI	22	5	4	0	13	53
Ellesmere 2nd XI	22	5	1	0	16	40
Welshpool 3rd XI	22	3	5	0	14	34
Wem 3rd XI	22	2	6	2	12	20

Highs and Lows

Highest Total by Team :
282-3 Bomere Heath 2nd XI v. Trysull & Seisdon 2nd XI 5 August

Lowest Total by Team :
25 Welshpool 3rd XI v. Perkins 3rd XI 16 September

Batsmen Scoring Centuries (9)

148*	T. Wickham	Bromfield 2nd XI v. Wem 3rd XI	24 June
142	K. McDonald	Bomere Heath 2nd XI v. Trysull & Seisdon 2nd XI	5 August
122*	K. Perks	Broseley 2nd XI v. Iscoyd & Fenns Bank 2nd XI	9 September
114	C. Gidney	Bromfield 2nd XI v. Iscoyd & Fenns Bank 2nd XI	19 August
111*	A. Kirby	Trysull & Seisdon 2nd XI v. Bromfield	10 June
110	C. Thomas	Bomere Heath 2nd XI v. Wem 3rd XI	19 August
108*	J. Archer	Pontesbury 2nd XI v. Alberbury 2nd XI	3 June
103*	S. Tracey	Bomere Heath 2nd XI v. Welshpool 3rd XI	12 August
102*	I. Lawrence	Trysull & Seisdon 2nd XI v. Wem 3rd XI	12 August
101	C. Gidney	Bromfield 2nd XI v. Bomere Heath 2nd XI	2 September

Bowlers Taking 7 Wickets or More (16)

M. Davies	8-31	Pontesbury 2nd XI v. Bomere Heath 2nd XI	1 July
L. Hodges	8-35	Iscoyd & Fenns Bank 2nd XI v. Broseley 2nd XI	24 June
M. Lewis	8-54	Ellesmere 2nd XI v. Pontesbury 2nd XI	13 May
J. Darlington	7-13	Wem 3rd XI v. Welshpool 3rd XI	26 August
G. Daniels	7-15	Broseley 2nd XI v. Welshpool 3rd XI	3 June
S. Wilson	7-18	Pontesbury 2nd XI v. Bromfield 2nd XI	22 July
A. Kirby	7-20	Trysull & Seisdon 2nd XI v. Bomere Heath 2nd XI	20 May
J. O'Keefe	7-35	Bomere Heath 2nd XI v. Ellesmere 2nd XI	24 June
S. Wall	7-36	Broseley 2nd XI v. Alberbury 2nd XI	26 August
K. Price	7-37	Perkins 3rd XI v. Broseley 2nd XI	2 September
B. Lambert	7-40	Bromfield 2nd XI v. Iscoyd & Fenns Bank 2nd XI	19 August
L. Hodges	7-45	Iscoyd & Fenns Bank 2nd XI v. Bomere Heath 2nd XI	29 July
L. Hodges	7-55	Iscoyd & Fenns Bank 2nd XI v. Ellesmere 2nd XI	10 June
G. Daniels	7-60	Broseley 2nd XI v. Welshpool 3rd XI	19 August
M. Cartwright	7-77	Trysull & Seisdon 2nd XI v. Pontesbury 2nd XI	24 June
C. Thomas	7-81	Bomere Heath 2nd XI v. Broseley 2nd XI	23 September

RESERVE DIVISION FOUR AVERAGES 1995

BATTING (qualification 10 innings, average over 25)

Name	Club	Innings	Not Out	Highest Score	Runs	Average
A. KIRBY	Trysull & Seisdon 2nd XI	16	7	111*	699	77.66
J. ARCHER	Pontesbury 2nd XI	14	3	108*	632	57.45
S. K. GWILT	Perkins 3rd XI	13	3	86*	435	43.50
C. GIDNEY	Bromfield 2nd XI	16	1	114	639	42.60
K. PERKS	Broseley 2nd XI	11	4	122*	269	38.42
N. PARKER	Broseley 2nd XI	19	3	86	551	34.44
C. THOMAS	Bomere Heath 2nd XI	15	2	110	435	33.46
Jas. PRICE	Broseley 2nd XI	18	4	71	460	32.85
A. BOURNE	Alberbury 2nd XI	17	6	60*	355	32.27
D. ARNOTT	Welshpool 3rd XI	21	1	97	645	32.25
L. O'NEILL	Iscoyd & Fenns Bank 2nd XI	18	4	54	432	30.85
T. BEBB	Alberbury 2nd XI	17	0	75	516	30.35
I. LAWRENCE	Trysull & Seisdon 2nd XI	18	2	102*	463	28.93
R. DIMMOCK	Trysull & Seisdon 2nd XI	19	1	81	485	26.94
S. TRACEY	Bomere Heath 2nd XI	12	1	103*	291	26.46
D. WHITEHOUSE	Alberbury 2nd XI	15	2	66*	342	26.30
D. RICHARDS	Bomere Heath 2nd XI	15	6	49*	228	25.33

BOWLING (qualification 20 wickets, average under 19)

Name	Club	Overs	Maidens	Runs	Wickets	Average
I. DAVIES	Perkins 3rd XI	128.1	37	270	31	8.70
K. PRICE	Perkins 3rd XI	301.4	70	633	66	9.59
S. LISTER	Alberbury 2nd XI	81	8	291	29	10.03
S. SMITH	Iscoyd & Fenns Bank 2nd XI	171.4	42	382	36	10.61
M. KAISER	Broseley 2nd XI	167.1	39	382	33	11.57
L. HODGES	Iscoyd & Fenns Bank 2nd XI	307.2	73	816	67	12.17
J. ARCHER	Pontesbury 2nd XI	128.4	31	350	28	12.50
R. DIMMOCK	Trysull & Seisdon 2nd XI	123.5	12	461	35	13.17
A. KIRBY	Trysull & Seisdon 2nd XI	167.3	39	407	30	13.56
T. ROBINSON	Perkins 3rd XI	191.4	45	508	37	13.72
C. THOMAS	Bomere Heath 2nd XI	261.5	53	733	52	14.09
G. HARRIS	Pontesbury 2nd XI	165.4	39	436	30	14.53
S. WALL	Broseley 2nd XI	249.1	68	643	44	14.65
I. HUMPHREYS	Bomere Heath 2nd XI	197	36	628	42	14.95
B. LAMBERT	Bromfield 2nd XI	215.5	50	542	36	15.05
J. DAVIES	Alberbury 2nd XI	124.2	23	310	20	15.50
B. HARRIS	Welshpool 3rd XI	116	12	361	23	15.69
M. DAVIES	Pontesbury 2nd XI	143	23	413	23	17.95
P. EDWARDS	Alberbury 2nd XI	153.1	28	475	26	18.26
P. DAVIES	Welshpool 3rd XI	195.2	28	656	35	18.74

KNOCKOUT COMPETITION RULES

1. **Object**

The object of the competition is to promote an eleven-a-side evening Knock-out competition among member clubs of the League. The games will be played according to the M.C.C. Laws of Cricket (1980 Code) modified as under 3 below.
2. **Organisation**

The Shropshire League Knock-out competition shall be open to the twelve Division One clubs together with the four clubs emerging from the qualifying competition to be known as the Shropshire League Village Knock-out. This will be open to all Division Two, Three and Four Clubs and arranged on an area basis with two clubs emerging from each of two zones. These four qualifiers will also compete as semi-finalists in the Village Knock-out.
3. **Rules**

Would all member clubs please note that the following regulations regarding the qualification rule (Law 1(a)), for both the League and Village K.O., will come into operation this forthcoming (1996) season.

Law 1

 - (a) Each player must be a member of the club he represents and a current Shropshire League player as defined under League rules.

A member of a side competing in both League and Village Knock-out Competitions must have appeared in 50% of his side's Shropshire League games during the current season to be eligible to play in Rounds One and Two of the Furrows Village Knockout Competition, this also applies to Round One of the league "Shrewsbury Chronicle Cup" Knockout Competition.

The appearance percentage figure relative to the current season's league games shall increase to 75% prior to any player being qualified to play in Round Three, Semi-finals and Final of The Furrows Village Knockout Competition. The same percentage figure shall also apply in Round Two Semi-finals and Final of the league "Shrewsbury Chronicle Cup" Knockout competition.

Note: In exceptional circumstances the aforementioned may be waived but only after permission has been sought by Clubs and granted by the League Knock-Out Sub-Committee. Clubs not complying with this regulation may be expelled from either competition.
 - (b) A player who is a member of more than one club can play only for one club in the competition.
 - (c) Any team failing to fulfil a fixture at any stage of either competition shall be automatically excluded from the following year's competition and will also be barred from entry in future years. Applications for re-admittance must be made to the League Executive Committee by no later than 1st October in the preceding year.

Law 3

 - (a) Umpires should note that no appeal against the light shall be allowed after the commencement of the second innings unless both captains agree that further play is undesirable.

Law 5

 - (a) A new ball will not be used, but a suitable re-polished or re-varnished ball of sound quality, which is acceptable to both captains, will be used throughout the game.

Law 12

 - (a) Excepting Finals, each side will have one innings consisting of twenty six-ball overs.
 - (b) Provided that both captains agree prior to the commencement of play, the match may be contested over a lesser number of overs in the event of bad weather or a late start.
 - (c) Before the toss for innings, the umpires shall acquaint themselves with the number of overs agreed upon by the two captains.

Law 16

 - (a) The interval between each innings shall be not more than ten minutes.

Law 21

 - (a) A match is won by the side scoring the higher number of runs in the agreed number of overs. In the event of scores being level, the side losing fewer wickets shall be declared the winner. If this is also equal, the side scoring the greater number of runs in the first ten overs (or at the half way point in their innings if different) shall be the winner. If this is also equal, the match is tied and will be replayed on a ground chosen by the visiting team.

Law 22

 - (a) No bowler may bowl more than five overs out of the allotted twenty. If a match of fewer overs is agreed upon, no bowler may bowl more than one quarter of the total.

Law 25

 - (a) In addition to the normal provisions of this law the umpire shall call and signal "wide ball" if the ball passes more than 18" outside the batsman's pads (to the legside), when he is standing at his normal position at the crease.

Restriction on placement of fielders (League K.O. only)

At the instant of delivery, a minimum of four fielders (plus bowler and wicket-keeper) must be within an area bounded by two semi-circles, centred on each middle stump, each with a radius of 30 yards and joined by a parallel line on each side of the pitch. In the event of an infringement the square-leg umpire shall call "no-ball".

The fielding circles may be marked by white painted dots at five yard intervals or if possible by white plastic or rubber (not metal) discs measuring approximately seven inches in diameter.

4. Fixtures

- (a) Both Village Knock-out and League Knock-out competitions shall be pre-drawn as far as the semi-final stages and the full draw will be notified to all clubs by the preceding 1st March and printed in the League Handbook.
- (b) The matches shall be played on the ground chosen by the side drawn as the home side.
- (c) Each round of both competitions will be played on a conference date specified by the Knock-out Sub-Committee and printed in the League Handbook. However, in the event of both teams agreeing, the match may be played on an earlier date than that which is laid down in the Rules providing the League Secretary is notified at least forty-eight hours prior to any such rearranged match.
- (d) In the event of inclement weather not allowing the match to be completed on the conference date, a revised date (within seven days of the original) must be agreed by both clubs immediately and communicated within 24 hours to a member of the Knockout Sub-Committee by the home club. Failure to agree on a new date will result in the Knockout Sub-Committee defining a date on which the match shall take place.
- (e) No match shall be played after the conference date - other than one rearranged under Rule 4(d). If it is found that clubs do arrange a match after the conference date, both clubs will be expelled from the competition.
- (f) If either club is unable to play on the conference date and are not able to agree an earlier date they shall forfeit the match.
- (g) Matches shall normally commence not later than 6.30 p.m. on the day arranged. The umpires shall call play not later than 6.45 p.m. and any side refusing to play shall lose the match.
- (h) Prompt starts are essential and the toss for innings shall take place at least fifteen minutes before the scheduled starting time of 6.30 p.m. (6.15 p.m. for League Knock-out). In the event of a team not being available to comply, the opposing team may, if it so wishes, exercise the right to claim the toss.
- (i) The winning clubs - in each round of both competitions - shall notify the League Secretary of the result within 48 hours of the fixture taking place.
- (j) After each round of both competitions, the home side are responsible for notifying their opponents and The League Secretary as soon as possible, in regard to whom they must play in the following stage.

5. Finals

- (a) The finals of both competitions shall be played on an afternoon basis on dates to be ratified by the Knock-out Sub-Committee.
- (b) A neutral ground selected by the Knock-out Sub-Committee shall be used. In the event of no ground being available the two sides will toss a coin to decide on a venue of the winner's choosing.
- (c) The finals shall be played over two innings each side of twenty overs per innings which shall be taken alternately. No bowler may bowl more than five overs in each innings.
- (d) In the event of the scores being equal at the end of the match the side losing fewer wickets shall be declared the winner. If this is also equal, the side scoring the greater number of runs in the first twenty overs of their innings shall be the winner. If this is also equal, the final shall be replayed.
- (e) The league will provide two new balls of good quality for each final.
- (f) The members of teams competing in finals will be presented with small trophies as mementoes of the occasion.

6. Umpires

- (a) All League Knockout matches shall be taken charge of by umpires appointed by the Shropshire Association of Cricket Umpires.
- (b) Umpires for the semi-finals and final of the Village Knockout will be appointed by the Shropshire Association of Cricket Umpires.
- (c) On request, the Shropshire Association of Cricket Umpires will also endeavour to supply umpires for the qualifying rounds of the Village Knockout.

1996 KNOCKOUT COMPETITION FIXTURES
"THE FURROWS SHROPSHIRE KNOCKOUT TROPHY"

GROUP 'A'
 Preliminary Round - Wednesday 8th May Welshpool v. Montgomery
 Newtown v. Llanidloes Bishops Castle v. Guilsfield Pontesbury v. Hanwood
 1st Qualifying Round 2nd Qualifying Round 3rd Qualifying Round
 Wed. 15th May Wed. 29th May Wed. 12th June

A Iscoyd & Fenns Bank v. Frankton
 B Ellesmere v. Bomere Heath
 C Harcourt v. Coton Hall A v. B
 D Cound v. Pontesbury or Hanwood C v. D A or B v. C or D
 E Overton v. Knockin & Kinnerley E v. F E or F v. G or H
 F Whittington v. Cae Glas G v. H
 G Alberbury v. Bishops Castle or Guilsfield
 H Newtown or Llanidloes v. Welshpool or Montgomery

GROUP 'B'
 Preliminary Round - Wednesday 8th May Willey v. M.E.B. Forton v. Glynwed
 Church Aston v. Edgmond British Sugar v. Tibberton Hodnet v. Shelton
 1st Qualifying Round 2nd Qualifying Round 3rd Qualifying Round
 Wed. 15th May Wed. 29th May Wed. 12th June

A Willey or M.E.B. v. British Sugar or Tibberton
 B Broseley v. Albrighton
 C Much Wenlock v. Trysull & Seisdon A v. B
 D Forton or Glynwed v. Church Aston C v. D A or B v. C or D
 or Edgmond E v. F E or F v. G or H
 E Bromfield v. Acton Reynald G v. H
 F Chelmarsh v. Condoval
 G Church Stretton v. Hinstock
 H Hodnet or Shelton v. Telford Moslems

Semi Finals (To be drawn): Wednesday, 3rd July

Final: Sunday, 11th August, at Wem C.C. - 1.30 p.m. start

All matches (with the exception of the final) shall start at 6.30 p.m.

Please Note: After each round it is the responsibility of the side, with home advantage, to inform the opposition - as soon as possible - to confirm the venues of ties. Also winning sides must contact either John Rees - 01686 622529 or Clive Smith - 01743 355383 - with the result of each match - within 48 hours of the match being completed.

"SHREWSBURY CHRONICLE CUP" LEAGUE KNOCKOUT

1st Round - Thurs. 27th June 2nd Round - Thurs. 11th July

A Shrewsbury v. Winners of Group B Match
 E or F v. G or H
 B Winners of Group A Match
 A or B v C or D v. Whitchurch
 C Wem v. Perkins A v. B
 D Shifnal v. Newport C v. D
 E St. Georges v. Winners of Group B Match
 A or B v. C or D E v. F
 F Wellington v. Bridgnorth G v. H
 G Oswestry v. Winners of Group A Match
 E or F v. G or H
 H Ludlow v. Wroxeter & Uppington

Semi Finals (To be drawn): Thursday, 25th July

Final: Bank Holiday Monday 26th August at Wellington C.C. - 12.30 p.m. start

All matches with the exception of the final shall start at 6.15 p.m.

Please Note: The winning side in each of the above matches must contact either John Rees - 01686 622529 or Clive Smith - 01743 355383 - with the result of each match - within 48 hours of the game being completed.

1995 KNOCKOUT COMPETITION RESULTS
"SHREWSBURY CHRONICLE CUP" LEAGUE KNOCKOUT FINAL

Monday, 28th August, at Shrewsbury. Wellington won by 15 runs.

First Innings
 Wellington 116-5 (G. Byram 38 n.o., S. Rogers 2-27)
 Bridgnorth 144-7 (Tony Hurdley 68 n.o., L. Evans 37 n.o.)

Second Innings
 Wellington 150 (D. Street 30, A. Breakwell 5-37)
 Bridgnorth 107 (M. Downes 3-22)

Man of the Match: Tony Hurdley (Bridgnorth)

Losing semi-finalists: Shrewsbury and Wem

"FURROWS VILLAGE CUP" KNOCKOUT FINAL

Sunday, 13th August, at Wem. Coton Hall won by 35 runs.

First Innings
 Coton Hall 141-2 (N. Beardmore 84)
 Frankton 103-7 (O. Ellis 40, G. Chesters 2-20, J. Edgerton 2-27)

Second Innings
 Coton Hall 86-8 (N. Clewlow 41)
 Frankton 89 (D. Powell 33, G. Chesters 4-25)

Man of the Match: Nicky Beardmore (Coton Hall)

Losing semi-finalists: Forton and Telford Moslems

PREVIOUS YEARS' FINALISTS

Winners Runners up

LEAGUE KNOCKOUT

1970	Rolls Royce	Newport
1971	Newport/Fenns Bank (TIE)	
1972	St. Georges	Bridgnorth
1973	Newport	St. Georges
1974	Rolls Royce	Wellington
1975	Shrewsbury	Shifnal
1976	St. Georges	Shrewsbury
1977	Shrewsbury	Ludlow
1978	Shrewsbury	Newport
1979	Shrewsbury	Whitchurch
1980	Wroxeter	St. Georges
1981	Shrewsbury	Wroxeter
1982	Shrewsbury	Whitchurch
1983	Shrewsbury	Wroxeter
1984	Shrewsbury	Whitchurch
1985	Wroxeter	Newport
1986	Wroxeter	Newport
1987	Wellington	Shrewsbury
1988	Shrewsbury	Whitchurch
1989	Newport	Newport
1990	Newport	Oswestry
1991	Wem	Oswestry
1992	Wellington	Wellington
1993	Shrewsbury	Shrewsbury
1994	Perkins	Whitchurch
1995	Wellington	Wellington

VILLAGE KNOCKOUT

1981	Bomere Heath	Fenns Bank
1982	Frankton	Albrighton
1983	Craven Arms	Coton Hall
1984	Shawbury	Craven Arms
1985	Bomere Heath	G.K.N.
1986	Bomere Heath	Overton
1987	Fenns Bank	Forton
1988	Bomere Heath	Coton Hall
1989	Fenns Bank	Forton
1990	Forton	Iscoyd & Fenns Bank
1991	Forton	Whittington
1992	Frankton	Telford Moslems
1993	Whittington	British Sugar
1994	Telford Moslems	Alberbury
1995	Coton Hall	Frankton

LEAGUE CLUB SECRETARIES

Acton Reynald M. J. LLOYD, Avonlea, Church Lane, Upton Magna
Tel.: (01743) 709609

Alberbury M. JONES, Yew Tree Cottage, Stoney Stretton,
Yockleton, Shrewsbury. Tel.: (01743) 821654

Albrighton MRS. K. JARVIS, 38 Weston Road, Albrighton, Wolverhampton
Tel.: (01902) 441251

Bishops Castle M. CINNAMOND, 2 Welsh Street Gardens,
Bishops Castle. Tel.: (01588) 638193

Bomere Heath T. WELCH, 15 Emscote, Hencott Park, Ellesmere Road,
Shrewsbury. Tel.: (01743) 363265

Bridgnorth J. GOLIGHTLY, 29 Church Street, Broseley
Tel.: (01952) 884152

British Sugar P. K. STARLING, 5 Barnet Close, Wellington, Telford
Tel.: (01952) 245667

Bromfield M. J. E. TEECE, Broughshane, Burway Road
Church Stretton. Tel.: (01694) 722021

Broseley T. GILL, 'Dandridge', Church Street, Broseley
Tel.: (01952) 882080

Cae Glas A. DIBNAH, 35 Smale Rise, Oswestry
Tel.: (01691) 671832

Calverhall D. P. FOX, 9 New Street Lane, Market Drayton
Tel.: (01948) 890663

Chelmarsh N. GAUDEN, 4 Deuxhill Close, Dawley Bank, Telford
Tel.: (01952) 419414

Church Aston S. BERESFORD, 28 Viscount Avenue, Aqueduct,
Telford. Tel.: (01952) 595917

Church Stretton S. WILLOCKS, 57 Watling Street, Church Stretton
Tel.: (01694) 723911

Condover S. JOHNSON, 8 Lime Paddock, Dorrington, Shrewsbury
Tel.: (01743) 718363

Coton Hall K. W. G. BATHO, Tonsberg, Wem Road, Clive
Shrewsbury. Tel.: (01939) 220370

Cound B. L. HUNT, 29 Brightwell, Reabrook, Shrewsbury
Tel.: (01743) 248329

Craven Arms A. J. TUDOR, 11a Wayford Close, Meole Estate,
Shrewsbury. Tel.: (01743) 350083

Edgmond I. LOVATT, 38 Grovefields, Leegomery, Telford
Tel.: (01952) 257858

Ellesmere P. E. GILL, 42 Cambria Avenue, Ellesmere
Tel.: (01691) 622793

Forton K. WILLIAMS, 11 Mere Close, Newport
Tel.: (01952) 405624

Frankton J. WATTERS, Station House, Welshampton
Ellesmere. Tel.: (01948) 710230

Glynwed S. J. BIRKETT, 29 Majestic Way, Aqueduct, Telford
Tel.: (01952) 592341

Guilfield G. EVANS, Avalon, 10 Raylaw Avenue, Guilfield, Welshpool
Powys. Tel.: (01938) 553951

Hanwood P. JOHNSON, 1 Bridge Cottages, Hanwood, Shrewsbury
Tel.: (01743) 860828

Harcourt MRS. M. BOYDEN, The Stone House, The Cliffe
Ruyton XI Towns, Shrewsbury. Tel.: (01939) 261000

Hinstock K. R. BRAILSFORD, Fir Tree Cottage, 7 Chester Road
Hinstock, Market Drayton. Tel.: (01952) 550448

Hodnet J. C. FRANCE, 2 Drayton Road, Hodnet, Market Drayton
Tel.: (01630) 685619

Iscoyd & Fenns Bank P. B. LAWRENCE, Eakring, Horseman's Green, Whitchurch
Tel.: (01948) 830422.

Knockin & Kinnerley MRS. D. MARTIN, 9 Greyfriars, Oswestry
Tel.: (01691) 661277

Lilleshall T. BUTLER, 8 Greengage Way, Muxton, Telford
Tel.: (01952) 677434

Llanidloes P. BENBOW, Fronhaul, Gorn Road, Llanidloes, Powys
Tel.: (01686) 412860

Ludlow S. HOOD, 26 Mortimer Drive, Orleton, Ludlow
Tel.: (01568) 780780

M.E.B. G. A. DAVIES, 32 Broadway, Ketley, Telford
Tel.: (01952) 247816

Montgomery R. KINSEY, Upper Aldress, Old Churchstoke, Montgomery
Tel.: (01588) 620110

Much Wentlock R. TEECE, 34 Queen Street, Castlefields, Shrewsbury
Tel.: (01743) 362371

N.A.L.G.O. J. W. REES, 7 Commercial Street, Newtown
Powys. Tel.: (01686) 622529

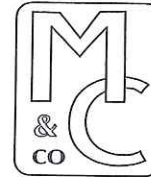
Newport M. R. WILLIAMS, Alyndale, Lower Sutton, Newport
Tel.: (01952) 810818

Newtown G. C. WILKINSON, Brambly Edge, Churchill Close,
Newtown, Powys. Tel.: (01686) 624292

Oswestry	A. CLARKE, 8 Lower Brook Street, Oswestry. Tel.: (01691) 659340
Overton	R. A. LAWRENSON, 2 Deva Terrace, School Lane, Overton-on-Dee, Wrexham, Clwyd. Tel.: (01978) 710537
Perkins	G. K. SMITH, Dunbattin, 60 Mount Pleasant Road, Shrewsbury. Tel.: (01743) 243695.
Pontesbury	R. BOWER, Pontesbury Hill, Pontesbury, Shrewsbury. Tel.: (01743) 790294
Prees	H. T. C. BATKIN, Weobley Farm, Hodnet, Market Drayton. Tel.: (01630) 685799
Quatt	MISS K. JONES, 27 Quatt, Bridgnorth Tel.: (01746) 780963
St. Georges	F. N. WILLIAMS, 30 Hopkins Heath, Shawbirch, Telford Tel.: (01952) 245355
Shelton	MRS. J. GRIFFITHS, 3 Squirrel Walk, Gains Park, Shrewsbury. Tel.: (01743) 355208
Shifnal	N. R. T. LORIMER, 63 Beech Drive, Shifnal. Tel.: (01952) 416933
Shrewsbury	R. G. CHAPMAN, 17 Millmead, Sutton Road, Shrewsbury. Tel.: (01743) 363082
Telford Moslems	I. HUSSEIN, 2 Waverley, Woodside, Telford. Tel.: (01952) 402380 (Mobile 0589 101162)
Tibberton	J. BOX, 3 Blackthorn Grove, Shawbirch, Telford. Tel.: (01952) 240699
Trysull & Seisdon	MRS. L. M. HOPKINS, 6 Belton Avenue, Wednesfield, Wolverhampton. Tel.: (01902) 735028
Wellington	P. B. BYRAM, Dunnough, 111 Haygate Road, Wellington, Telford. Tel.: (01952) 242613
Welshpool	A. PRITCHARD, Minffordd, Arddleen, Llanymynech, Powys. Tel.: (01938) 590330
Wem	J. W. J. LEWIS, 51 Cordwell Park, Wem. Tel.: (01939) 235476
Whitchurch	MRS. J. KNOTT, Leasholme, Lighteach Road, Prees, Whitchurch. Tel.: (01948) 840968
Whittington	M. BRUNT, Greystone, Daisy Lane, Whittington, Oswestry. Tel.: (01691) 661874
Willey	E. HALL, 2 Chantry Close, Cherry Brook, Broseley, Telford. Tel.: (01952) 882635
Wroxeter and Uppington	D. BREARLEY, 14 Hafren Road, Shrewsbury. Tel.: (01743) 352960

You make it ... we'll help you keep it!

- *Timely service - clear fee structure*
- *We'll help sort out your accounting and book-keeping problems*
- *We can process your payroll and deal with the PAYE problems*
- *We'll minimize your taxes*
- *Free initial half hour consultation*



MORRIS, COOK & Co.
Chartered Accountants
Registered Auditors

OSWESTRY **LLANGOLLEN** **ELLESMERE** and **WREXHAM**
Tel.: 01691 654545 01978 860376 01691 622098 01978 350460



THE ANCHOR INN FRANKWELL
YOUR HOSTS
RICHARD & CAROL
Specialising in Steaks
and Traditional Ales

SMALL PARTIES CATERED FOR

TEL.: (01743) 355236

CAPTAINS AND WEEKEND CONTACTS

Club	Captain	Contact
Acton Reynald 1st XI 2nd XI	S. J. France (01939 220232) S. A. Owen (01743 367407)	Captains or Secretary
Alberbury 1st XI 2nd XI	R. Holloway (01743 850293) R. Mason (01743 850630)	Captains or Secretary
Albrighton 1st XI 2nd XI	D. Shimmons (01952 596202) S. Aucott (01902 373216)	Captains or Secretary Ground (01902 373221)
Bishops Castle	D. Martin (01547 528083)	Captain or Secretary or S. Morris (01588 638523)
Bomere Heath 1st XI 2nd XI	M. Kelly (01939 290929) C. Thomas (01939 290103)	Captains or Secretary or M. Coales (01939 290423) or C. Wigley (01939 290501)
Bridgnorth 1st XI 2nd XI 3rd XI	K. Sharp (01952 730383) G. Mark (01299 271380) G. Bristow (01746 762217-evenings)	Captains Ground (01746 764919) S. Weston (01746 767323) (3rd XI only)
British Sugar 1st XI 2nd XI	D. Hayward (01952 417346) D. Page (01952 411814)	Captains or P. Rider (1st XI) (01952 770384) or G. Coles (2nd XI) (01952 603747)
Bromfield 1st XI 2nd XI	J. Evans (01743 340135) P. Lewis (01584 874378)	Captains or A. Crump (1st XI) (01694 723283) or P. Percy (2nd XI) (01694 724103)
Broseley	J. R. Lloyd (01952 882983)	Captain Ground (01952 882877) Groundsman (01952 884204)
Cae Glas 1st XI 2nd XI	A. Griffiths (01691 658608) M. Matthews	Captains or Secretary or J. Hartshorn (2nd XI only) (01691 662545)
Calverhall	S. Parker (01948 890684)	Secretary or Calverhall Social Club (01948 890616)
Chelmarsh	S. Lewis (01746 861353)	Captain or Secretary or Chelmarsh W.M.C. (01746 861463) or Meeting Point (Away Games) "The Carpenter's Arms" Bridgnorth (01746 768781)

Church Aston	M. Lane (01952 501273)	Captain or Secretary or R. Grisman (01952 248805)
Church Stretton	R. C. Evans (01743 874737)	Captain or Secretary
Condover 1st XI 2nd XI	D. Pugh (01743 364406) R. Slowik (01952 510826)	Captains or Secretary or M. Mottram (01743 718593) or J. Mansell (01743 872594)
Coton Hall	J. Edgerton (01743 358542)	Captain or Secretary or N. Clewlow (01743 240919)
Cound 1st XI 2nd XI	A. Griffiths (01743 440228) T. Bolland (01939 210645)	1st XI Captain or Secretary 2nd XI M. Tomkins (01743 874162)
Craven Arms	D. Caslin (01588 673084)	Secretary or I. Davies (01584 861274) or M. Gittins (01588 673779)
Edgmond	M. Parton (01952 400428)	Captain or Secretary
Ellesmere 1st XI 2nd XI	Duncan Ralphs (01939 232874) P. Jones (01691 654088)	Captains or Secretary or Dave Ralphs (01939 232874)
Forton 1st XI 2nd XI	P. Newbold (01952 813361) I. Perry (01952 820813)	Captains or Secretary
Frankton 1st XI 2nd XI	C. Edwards (01743 741223) R. Edwards (01939 270428)	Captains or Secretary
Glynwed	A. Davies (01952 410977)	Captain or Secretary or P. Davies (01952 419242)
Gullsfield	R. Shingler (01938 553533)	Captain or Secretary or "Kings Head" (01938 553656)
Hanwood	M. Knight (01743) 243019	Captain or Secretary or R. Wellings (Groundsman) (01743 860676)
Harcourt	R. Davies (01939 220525)	Captain or Secretary or R. Phillips (01939 220258)
Hinstock	R. Gough (01630 638285)	Captain or Secretary
Hodnet	J. R. Baker (01694 771311)	Captain or N. Humphries (01630) 655246 or Hodnet WMC (01630 685331)
Iscoyd & Fenns Bank 1st XI 2nd XI	K. Bywater (01948 830542) L. Hodges (01948 665669)	Captains or J. Faulkner (01948 830384)
Knockin & Kinnerley	E. McCarney (01743 362606)	Captain or Secretary or G. Harris (01691 682393)

Lilleshall B. Wedge P. Talbott (01952 604468)
Ground (01952 677644)

Llanidloes
1st XI S. Moorhouse (01686 413892) Captains or Secretary or
2nd XI Contact: B. Lewis (01686 412051) A. Evans (01686 413524)

Ludlow
1st XI W. Moore (01568 847077) Captains or Secretary
2nd XI S. Hood (01568 780780) Ground: (01584 873244)
3rd XI R. Burgoyne (01584 861340)

M.E.B. D. Hinton (01743 359985) Captain or D. Adams
(01743 247903)

Montgomery S. Davies (01686 668247) Captain or Secretary

Much Wenlock
1st XI R. Dower (01952 727152) Captains or Secretary
2nd XI D. Edwards (01952 728137) or C. Lewis (01952 727981)

N.A.L.G.O. D. Burton (01743 358151) Captain

Newport
1st XI T. C. Davies (01952 812049) Captains or Secretary
2nd XI A. Bird (01952 274875) Ground (01952 810403)

Newtown
1st XI B. Jones (01686 628020) Captains or Secretary
2nd XI G. C. Wilkinson (01686 624292) Ground (01686 626433)

Oswestry
1st XI N. Wanless (01691 653890) Captains or Secretary or
2nd XI S. Humphreys (01691 671647) J. M. Robinson
3rd XI A. Leggatt (01691 661244) (01691 662159)
4th XI J. Richardson (01691 650021) Ground (01691 653006)

Overton M. H. Lawrenson (01978 710219) Captains or Secretary or
N. Woolley (01978 781079)

Perkins
1st XI A. Mackelworth (01902 780968) Captains or Social Club
2nd XI G. K. Smith (01743 243695) (01743 352135)
3rd XI T. Robinson (01743 448923) (opening hours only)

Pontesbury
1st XI D. Corfield (01743 790355) R. Challinor (01743 790615)
2nd XI J. Archer (01743 355174)

Prees V. Lines (01948 840490) Captain or M. Batkin
(01630) 685288

Quatt B. Jones (01746 780963) Captain or G. Evans
(01746 765639)

St. Georges
1st XI W. Bott (01952 260294) Captains
2nd XI J. Ball (01952 403350) Ground
3rd XI R. Price (01952 242901) (01952 612911)

Shelton
1st XI S. Griffiths (01743 355208) Captains or Secretary
2nd XI R. Walker (01743 355864) S.A.H.A. Club (01743 261000)
3rd XI R. Wolf (01743 367232)

Shifnal
1st XI W. Clarke (01952 461059) Captains or F. Jones
2nd XI N. Lorimer (01952 416933) (01952 460355)
3rd XI A. Collins (01952 462272) Ground (01952 462033)

Shrewsbury
1st XI S. C. Gale (01743 355961) Captains
2nd XI M. J. Green (01743 362254) Ground (01743 363655)
3rd XI M. P. T. W. Jones (01743 358352)

Telford Moslems Fiaz Mohammed Secretary
(0973 685677 - mobile)

Tibberton S. Peckham Secretary or D. Williams
(01952 249707)

Trysull and Seisdon
1st XI T. Corkindale (0121- 352 1781) Captains or Secretary
2nd XI A. Kirby (01902 726395)

Wellington
1st XI C. Martin (01952 256997) Captains or Secretary or
2nd XI C. Black (01952 246341) M. Read (01952 461836)
3rd XI M. Miles (01952 660086) Ground (01952 251539)
4th XI A. Parkyn (01952 502755)

Welshpool
1st XI I. Cadwallader (01938 553200) Captains or Secretary
2nd XI D. Burdgen (01938 820565) or C. Evans (01938 552687)
3rd XI D. Arnott (01686 640203) Ground (01938 553274)

Wem
1st XI B. Perry (01743 463142) Captains or Secretary or
2nd XI P. Brook (01939) 235390 P. Ellis (01939 290739)
3rd XI P. Strefford (01743 350244) Ground (01939 234680)

Whitchurch
1st XI J. Harris (01743 873561) Captains or Secretary or
2nd XI J. Sherwood (01948 666192) D. Austin (01948 841043)
Ground (01948 663923)

Whittington
1st XI G. Litchfield (01691 773196) Captains or Secretary
2nd XI R. Terry (01691 655778) Ground (01691 670624)

Witley
1st XI E. Hall (01952 882635) Captains or Secretary or
2nd XI A. Griffiths (01952 882932) L. Thomas (01952 883821)

Wroxeter & Uppington
1st XI J. B. R. Jones (01743 741368) Captains or Secretary
2nd XI R. Liver (01939 210270) or R. Jones (01952 86314)
Ground (01952 740214)

UMPIRES PANEL

PANEL ORGANISER :

Mike Sheehy, 4 Snowdrop Close, Sutton Park, Shrewsbury.
Tel.: (01743) 361651

PANEL MEMBERS :

Jack Ashworth, 20 New College Road, Shrewsbury. Tel.: (01743) 353693.
Dennis Broom, 29 The Paddocks, Bicton Heath, Shrewsbury.
Tel.: (01743) 240143.
David Flanagan, 2 The Parks, Burwarton, Bridgnorth
Tel.: (01746) 787627
Bryan Foulkes, The Acorns, Domgay Road, Four Crosses, Llanymynech.
Tel.: (01691) 830266.
Ken Hughes, 102 Haygate Road, Wellington. Tel.: (01952) 254447.
Robin Johnson, Windrush House, 9 Mayfield Park, Shrewsbury.
Tel.: (01743) 243023.
Tony Jones, 62 Ardern Avenue, Dawley. Tel.: (01952) 501408.
Brian Kilson, 73 Boscobel Drive, Heath Farm, Shrewsbury.
Tel.: (01743) 367836.
John McGowan, 10 The Armoury, Wenlock Road, Shrewsbury.
Tel.: (01743) 235452.
P. Mitchell, Summerfield, Salisbury Road, Market Drayton
Tel.: (01630) 654582.
Robert Morris, Greenwood, Chirk Road, Gobowen, Oswestry.
Tel.: (01691) 650525.
Dave Partridge, 10 Stretton Close, Sutton Heights, Telford.
Tel.: (01952) 585695
Dave Roberts, 13 Clun Close, Wellington. Tel.: (01952) 223084.
Mike Sheehy, 4 Snowdrop Close, Sutton Park, Shrewsbury.
Tel.: (01743) 361651
Tom Shepherd, 30 Cockshutt Lane, Broseley. Tel.: (01952) 882429
Clive Smith, 12 Upper Road, Meole Brace, Shrewsbury.
Tel.: (01743) 355383.
Dennis Smith, 26 Broadway Avenue, Trench, Telford.
Tel.: (01952) 676530.
Jim Strachan, 50 Audley Road, Newport. Tel.: (01952) 403903.
Robert Talbot, 28 Maslan Crescent, Tibberton.
Tel.: (01952) 550598.
Phil Tiddy, Oakdene, Llansilin, Oswestry. Tel.: (01691) 791238.
Peter Tudor, 15 Clun Close, Wellington, Telford.
Tel.: (01952) 248934
Wally Welch, 12 Bow Way, Bomere Heath.
Tel.: (01939) 290496.
Bob Whittall, 3 Saltney Close, Shrewsbury.
Tel.: (01743) 361304.
Frank Williams, The Avenue, Knockin. Tel.: (01691) 682243.

SHROPSHIRE ASSOCIATION OF CRICKET UMPIRES AND SCORERS

The Division One Umpires Panel is organised by the Shropshire Association of Cricket Umpires, and admission to the list is dependent upon satisfactory attendance at its training courses.

Training courses are held each year at Wellington and Whittington Cricket Clubs on Wednesday evenings from January to mid-March. The Association is also pleased to respond to requests from Clubs for explanations of the more frequently used laws at Club meetings of players and officials.

Dave Roberts - Chairman
Mike Sheehy - Secretary/Treasurer

1995 LEAGUE REPRESENTATIVE MATCHES

LEAGUE CRICKET CONFERENCE PRESIDENT'S TROPHY KNOCKOUT COMPETITION

1st Round. Sunday, 4th June at Bristol. Won by 26 runs.
Furrows Shropshire Cricket League 138 (M. Turner 55)
Bristol Cricket Association 112 (J. Anders 5-18, G. Byram 3-14)

2nd Round. Sunday, 2nd July, at Kidderminster. Won by 3 runs.
Furrows Shropshire Cricket League 187-9 (C. Martin 51, G. Byram 31 n.o.)
Oxbridge Combined Counties League 184-8 (A. Byram 3-29, B. Shantry 3-33)

3rd Round (Quarter Final). Sunday, 23rd July at Wellington. Won by 16 runs.
Furrows Shropshire Cricket League 203-9 (A. Mackelworth 38, W. O. Davies 34,
C. Martin 31)
Birmingham & District Cricket League 187-9 (J. Mayer 2-28, M. Marvell 2-48)

Semi-Final. Sunday, 13th August at Shrewsbury. Won by 5 wickets.
Liverpool & District Cricket Competition 182-7 (P. Pridgeon 4-27, A. Byram 2-24)
Furrows Shropshire Cricket League 184-5 (A. Johnson 58, C. Martin 45,
A. Byram 40 n.o.)

Final. Sunday, 3rd September at Denby (Derbyshire). Lost by 12 runs.
Derbyshire County Cricket League 183 (A. Barnard 4-32)
Furrows Shropshire Cricket League 171-8 (J. Anders 44, M. Marvell 34)

MIDLANDS CLUB CRICKET CONFERENCE INTER LEAGUE KNOCKOUT COMPETITION

1st Round. Tuesday, 6th June, at Cannock. Won by 43 runs.
Furrows Shropshire Cricket League 202-6 (A. Johnson 86, M. Turner 39,
C. Martin 31)

Willis Corroon League 159-8 (A. Johnson 3-33, J. Anders 3-38)

2nd Round (Quarter Final). Tuesday, 4th July at Shrewsbury. Won by 64 runs.
Furrows Shropshire Cricket League 251-4 (C. Martin 76, M. Turner 72 n.o.,
M. Davidson 31)

Staffordshire Club Championship 187 (A. Johnson 4-27, J. Anders 2-20)

Semi-Final. Tuesday, 25th July at Shrewsbury. Won by 61 runs.
Furrows Shropshire Cricket League 284-7 (M. Davidson 79, G. Home 60 n.o.,
W. O. Davies 48, A. Johnson 37)

Plumb Centre League 223 (J. Anders 2-27, J. Mayer 2-30, A. Byram 2-34,
G. Home 2-37)

Final. Tuesday, 15th August at Knowle and Dorridge. Lost by 14 runs.
Gunn and Moore Notts. Alliance 223-8 (P. Pridgeon 3-54, M. Downes 3-63)
Furrows Shropshire Cricket League 219-9 (S. Gale 64, J. Foster 48,
W. O. Davies 30)

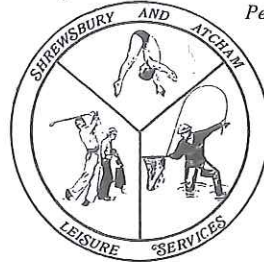
OTHER MATCH

Sunday, 25th June at Whitchurch. Furrows League XI won by 7 wickets.
Whitchurch 219-1 (D. Austin 101 n.o., E. Middleton 44)
League XI 222-3 (N. Salisbury 132, M. Chambers 40)

**SHREWSBURY AND ATCHAM
LEISURE SERVICES**

SWIMMING BATHS :
The Quarry, Shrewsbury
Tel.: 236583

FISHING
Tel.: 231456
*Permits available from
tackle shops in
Shrewsbury*



GOLF : (No membership required)
Meole Brace, Shrewsbury. Junction old A5/A49
Tel.: 364050

**WELSHPOOL
CRICKET CLUB**



*extends a warm welcome to
members of Furrows
Shropshire Cricket League
sides visiting us for the first
time, and to those we have
known over the years.*

**Cricketers and friends are always welcome at
Maesydre, Welshpool. (Tel.: Welshpool 553274)**

58

RAILWAY CLUB

Ellesmere Road
Shrewsbury
Tel.: (01743) 362446

*Large function room available for private hire
New members always welcome
Families welcome*

Facilities include :
Football pitch, snooker room, pool
Bowling Greens, etc.



TEMPERTON & TEMPERTON
Auctioneers, Valuers, Surveyors and
Estate Agents
at

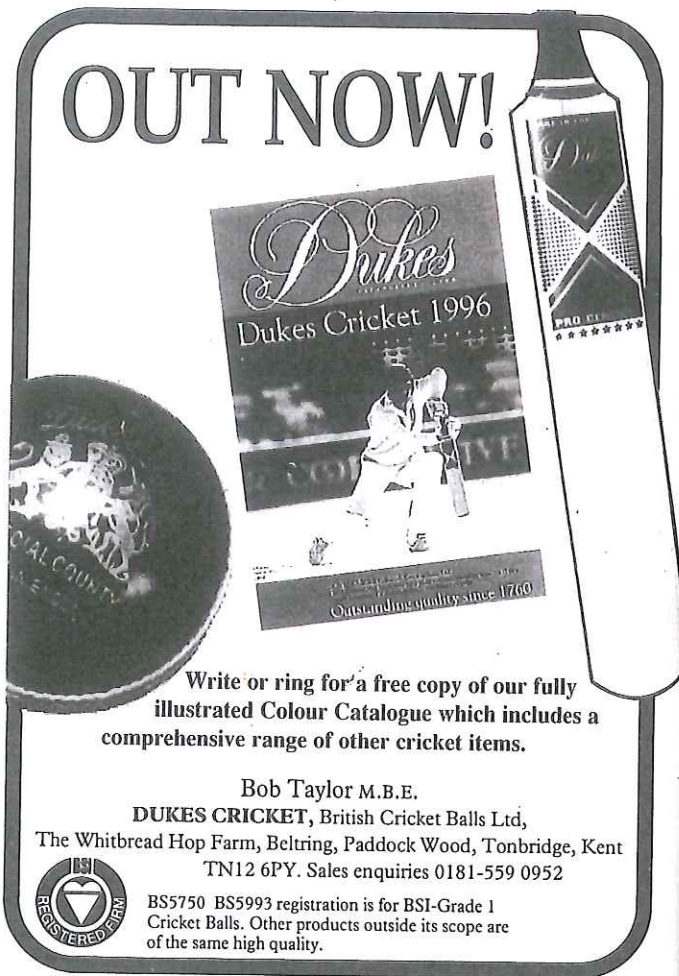
25 HIGH STREET, NEWPORT, SHROPSHIRE
(TEL.: Newport 01952 812519)
71 MARKET STREET, OAKENGATES, TELFORD
(TEL.: Telford 01952 612516)
and 22 HIGH STREET, DAWLEY, TELFORD
(Tel.: Telford 01952 504446)

Agents for HALIFAX BUILDING SOCIETY

- Sales of Residential Properties ●
- Valuations and Surveys ●
- Sales & Management of Commercial Properties ●

59

OUT NOW!



Write or ring for a free copy of our fully illustrated Colour Catalogue which includes a comprehensive range of other cricket items.

Bob Taylor M.B.E.

DUKES CRICKET, British Cricket Balls Ltd,
The Whitbread Hop Farm, Beltring, Paddock Wood, Tonbridge, Kent
TN12 6PY. Sales enquiries 0181-559 0952



BS5750 BS5993 registration is for BSI-Grade 1 Cricket Balls. Other products outside its scope are of the same high quality.

 **BRISTOW**
sports & leisure 

45 HIGH STREET, BRIDGNORTH
SHROPSHIRE WV16 4DX

Telephone : Bridgnorth (01746) 761701

Fax: (01746) 761701

Shropshire's

No. 1 FOR ALL
YOUR
CRICKET
NEEDS

**BEST PRICES GIVEN ON
CRICKET BATS, BALLS,
CLOTHING, etc.**

Suppliers of Gray-Nicolls, Duncan Fearnley
and County Cricket Equipment

*We also offer a printing, embroidery
service for caps, shirts, sweaters
and competitive pricing on trophies
(please ask for catalogue)*